

PATRICK HUGHES

MULTIPLES

A solid orange vertical bar on the left side of the page.

PATRICK HUGHES MULTIPLES

FLOWERS

Exaggeration is the name of Hughes' game. His perspective is forced, his doors and walls set off towards infinity far too enthusiastically. Flat perspective drawing would be just too flat for him. The shapes Patrick uses could be put together in a different way to make stage sets, geometric caves, but he makes them the wrong way round, sticking out instead of going in. "We have mountains compared with which those are valleys", Lewis Carroll wrote.

People will tell you these multiples move. They too are exaggerating. They know they are stationery objects, but people forget this every time when they are moving past them.

Impossible objects, changing tents, art galleries, library doors, rooms with suitcases, arcades and skyscrapers, this artist has manoeuvred many different things into his system. He has kept to the discipline of the straight lines of perspective, but they have led him to many different pictures. Hughes' other main quest is for shapes and designs to lever his representations into. He sometimes makes a long narrowing vista, tending towards infinity. He

uses hidden corners, and cut-in shapes like the suitcase. Double doors, flat ends with landscapes are other strategies. He sometimes uses the same shapes with different imagery, or the same imagery on different shapes.

The doors cannot really open and close to disclose and shut down delightful scenes; the rooms and galleries and corridors do not turn around and follow us round the room; there are no Brillo boxes or impossible objects or doll's houses – only empty spaces. Without exaggerating, I must say that Patrick's exaggerations are only matched by the exaggerations of his public, who tell me unbelievable things that are true.

Murray McDonald



Reverspective Hand painted multiple with lithography, 1996 Edition 35 40 x 75 x 20 cm / $15\frac{3}{4}$ x $29\frac{1}{2}$ x $7\frac{3}{4}$ in



Arcadia Hand painted multiple with lithography, 1997 Edition 35 40 x 75 x 20 cm / $15\frac{3}{4}$ x $29\frac{1}{2}$ x $7\frac{3}{4}$ in



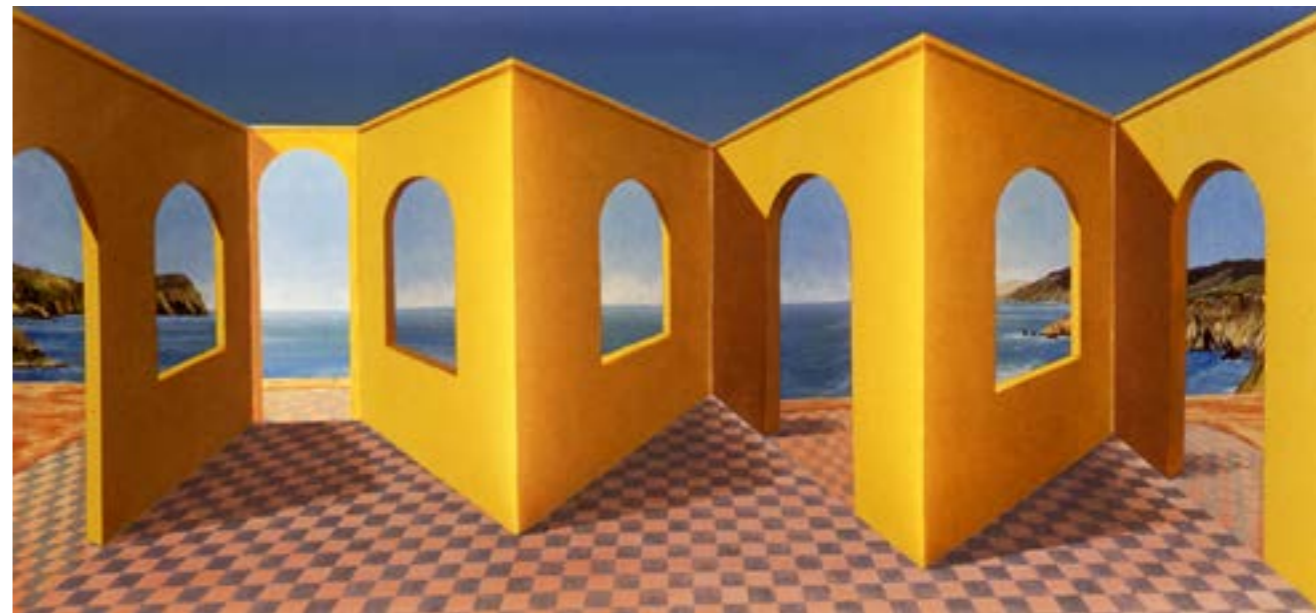
Presents Hand painted multiple with lithography, 1997 Edition 35 40 x 75 x 20 cm / $15\frac{3}{4} \times 29\frac{1}{2} \times 7\frac{3}{4}$ in



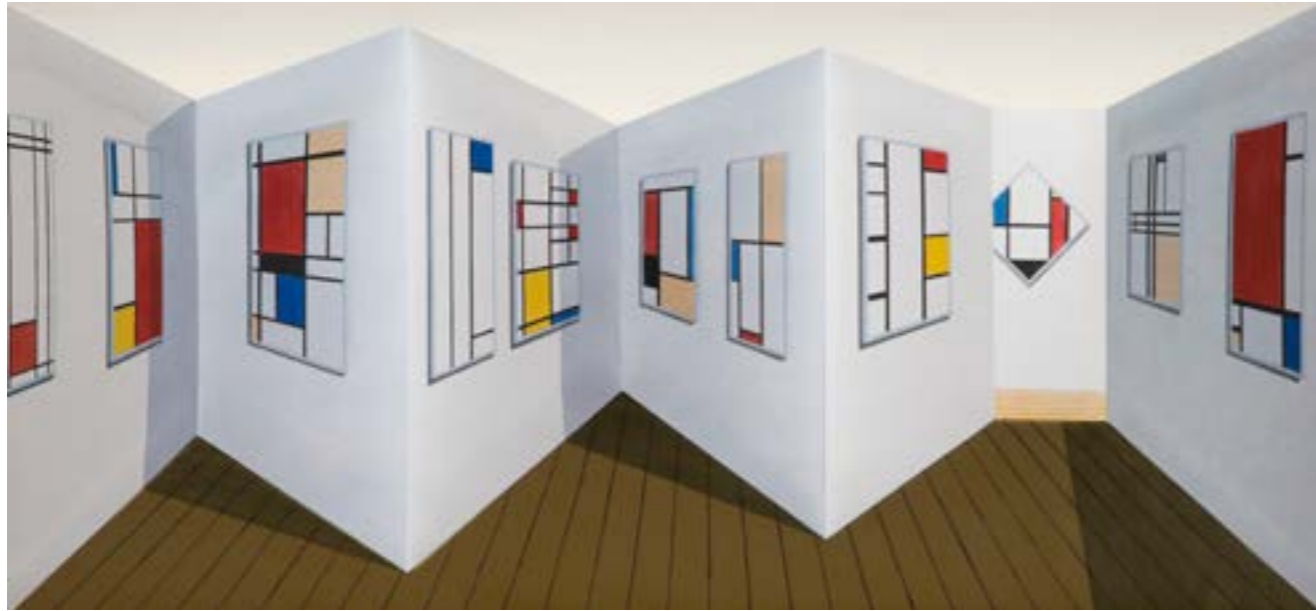
Outdoors Hand painted multiple with lithography, 1998 Edition 35 51 x 63 x 16 cm / $20 \times 24\frac{3}{4} \times 6\frac{1}{2}$ in



Palm Door Hand painted multiple with lithography, 1998 Edition 35 51 x 63 x 16 cm / 20 x 24 $\frac{3}{4}$ x 8 $\frac{1}{4}$ in



Openings Hand painted multiple with lithography, 1999 Edition 35 45 x 75 x 20 cm / 17 $\frac{3}{4}$ x 29 $\frac{1}{2}$ x 8 in



Mondrians Hand painted multiple with lithography, 1998 Edition 35 40 x 75 x 20 cm / 16 x 30 x 8 in



Architecture Hand painted multiple with lithography, 1999 Edition 35 41.5 x 87 x 17 cm / 16½ x 34¼ x 6¾ in



Bookish Hand painted multiple with lithography, 1999 Edition 35 44.5 x 84.5 x 21 cm / 17½ x 33¼ x 8¼ in



Multiples Hand painted multiple with lithography, 1999 Edition 35 41.5 x 87 x 17 cm / 16½ x 34¼ x 6¾ in



Indoors Hand painted multiple with lithography, 2000 Edition 40 56 x 86.5 x 17.5 cm / 22 x 34 x 10 $\frac{3}{4}$ in



Retroperspective Hand painted multiple with lithography, 2000 Edition 40 44 x 77 x 20 cm / 17 $\frac{3}{4}$ x 30 $\frac{1}{4}$ x 8 in



City Hand painted multiple with lithography, 2000 Edition 40 85.5 x 67 x 15 cm / 33½ x 26¼ x 6 in



Journeys Hand painted multiple with lithography, 2000 Edition 40 42 x 87.5 x 17 cm / 16½ x 34½ x 6¾ in



Horizon Hand painted multiple with lithography, 2000 Edition 40 46 x 96.5 x 15 cm / 18 x 38 $\frac{1}{4}$ x 6 $\frac{1}{4}$ in



Mark Hand painted multiple with lithography, 2001 Edition 40 44 x 77 x 20 cm / 17 $\frac{1}{4}$ x 30 $\frac{1}{4}$ x 8 in



Hues Hand painted multiple with lithography, 2001 Edition 40 42 x 87.5 x 17 cm / 16½ x 34½ x 6¾ in



Home Hand painted multiple with lithography, 2001 Edition 40 44 x 80 x 19 cm / 17¼ x 31½ x 7½ in



Outlook Hand painted multiple with lithography, 2002 Edition 40 43.5 x 78 x 19 cm / 17 x 30½ x 7½ in



Reading Hand painted multiple with lithography, 2002 Edition 40 42 x 79 x 18 cm / 16½ x 31 x 7¼ in



Medley Hand painted multiple with lithography, 2002 Edition 40 42 x 87.5 x 17 cm / 16½ x 34¼ x 6½ in



Double Doors Hand painted multiple with lithography, 2003 Edition 40 42 x 87 x 15 cm / 16½ x 34¼ x 5¾ in



Shutters Hand painted multiple with lithography, 2003 Edition 45 46 x 96.5 x 15 cm / 18 x 38 x 6 in



Andy Hand painted multiple with lithography, 2003 Edition 45 44 x 77 x 20 cm / 17½ x 30½ x 8 in



Cubism Hand painted multiple with lithography, 2003 Edition 45 44.5 x 122 x 17 cm / 16 x 47 x 8 in



Travel Hand painted multiple with lithography, 2004 Edition 45 42 x 80 x 19 cm / 16¾ x 31½ x 7½ in



Art Apartment Hand painted multiple with lithography, 2004 Edition 45 42.6 x 95 x 18.2 cm / 16¾ x 37½ x 7¼ in



Library Doors Hand painted multiple with lithography, 2004 Edition 45 46 x 97 x 15 cm / 18¼ x 38¼ x 6 in



Magrittes Hand painted multiple with lithography, 2004 Edition 45 47.5 x 102.5 x 24 cm / 18 $\frac{3}{4}$ x 40 $\frac{1}{2}$ x 9 $\frac{1}{2}$ in



InTents Hand painted multiple with lithography, 2005 Edition 45 44.5 x 96 x 15 cm / 17 $\frac{1}{2}$ x 37 $\frac{3}{4}$ x 6 in



Impossible Hand painted multiple with lithography, 2005 Edition 45 46 x 82.5 x 18.5 cm / 18¼ x 32½ x 7½ in



Gazebo Hand painted multiple with lithography, 2005 Edition 45 43 x 95 x 18.5 cm / 17 x 37½ x 7½ in



Venice Hand painted multiple with lithography, 2006 Edition 45 42.5 x 88 x 17 cm / $16\frac{3}{4}$ x $34\frac{3}{4}$ x $6\frac{3}{4}$ in



Purism Hand painted multiple with lithography, 2006 Edition 45 43 x 90 x 19 cm / $16\frac{3}{4}$ x $34\frac{3}{4}$ x $6\frac{3}{4}$ in



Grand Tetons Hand painted multiple with lithography, 2006 Edition 45 46.5 x 97 x 14.5 cm / 18 $\frac{1}{4}$ x 38 $\frac{1}{4}$ x 5 $\frac{3}{4}$ in



Venezia Hand painted multiple with lithography, 2006 Edition 45 42.5 x 88 x 17 cm / 16 $\frac{3}{4}$ x 34 $\frac{3}{4}$ x 6 $\frac{3}{4}$ in



Grand Canals Hand painted multiple with lithography, 2007 Edition 45 44 x 95.5 x 22 cm / 17½ x 37¾ x 8¾ in



St. Ives Hand painted multiple with lithography, 2007 Edition 45 43 x 95 x 18 cm / 17 x 37½ x 7¼ in



History Hand painted multiple with lithography, 2007 Edition 45 42.5 x 88 x 17 cm / 16³/₄ x 34³/₄ x 6³/₄ in



Gifts Hand painted multiple with lithography, 2007 Edition 45 43 x 90 x 19 cm / 17 x 35¹/₂ x 7¹/₂ in



Pop Hand painted multiple with lithography, 2008 Edition 45 43 x 95 x 18 cm / 17 x 37½ x 7¼ in



Baggage Hand painted multiple with lithography, 2008 Edition 35 42.5 x 34.5 x 17 cm / 16¾ x 13¾ x 6¾ in



Brillo Hand painted multiple with lithography, 2008 Edition 35 42.5 x 34.5 x 17 cm / 16 $\frac{3}{4}$ x 13 $\frac{3}{4}$ x 6 $\frac{3}{4}$ in



Sheep Hand painted multiple with lithography, 2008 Edition 35 42.5 x 34.5 x 17 cm / 16 $\frac{3}{4}$ x 13 $\frac{3}{4}$ x 6 $\frac{3}{4}$ in



Hoppera Hand-painted multiple with archival inkjet, 2008 Edition 45 43 x 95.5 x 18.5 cm / 17 x 37 $\frac{3}{4}$ x 7 $\frac{1}{2}$ in



Cloudy Hand-painted multiple with archival inkjet, 2008 Edition 45 46 x 97 x 15 cm / 18 $\frac{1}{4}$ x 38 $\frac{1}{4}$ x 6 in



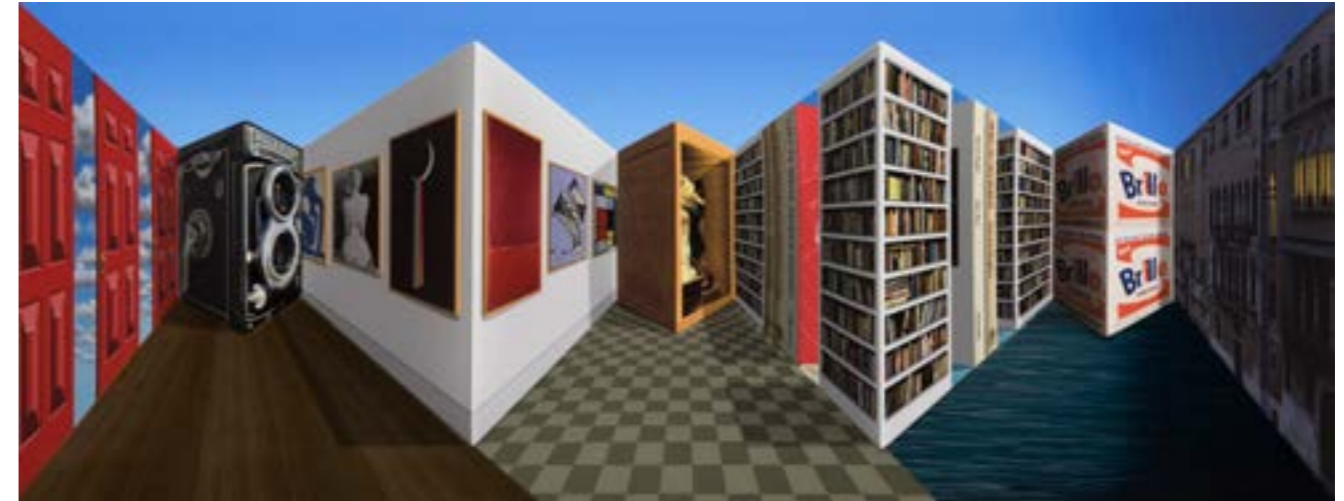
Moonshine Hand-painted multiple with archival inkjet, 2009 Edition 45 42.5 x 88 x 17 cm / 16³/₄ x 34³/₄ x 6³/₄ in



Camera Hand-painted multiple with archival inkjet, 2009 Edition 45 42 x 92 x 18 cm / 16³/₄ x 36¹/₄ x 7¹/₄ in



Volumes Hand-painted multiple with archival inkjet, 2009 Edition 45 45.5 x 111 x 21 cm / 18 x 43 $\frac{3}{4}$ x 8 $\frac{1}{2}$ in



Compendium Hand-painted multiple with archival inkjet, 2010 Edition 45 43 x 90 x 20 cm / 17 x 35 $\frac{1}{2}$ x 8 in



Turner Hand-painted multiple with archival inkjet, 2010 Edition 50 42.5 x 88 x 17 cm / 16³/₄ x 34³/₄ x 6³/₄ in



Poppy Hand-painted multiple with archival inkjet, 2010 Edition 50 44.5 x 111 x 21 cm / 17³/₄ x 43³/₄ x 8¹/₂ in



Living Room Hand-painted multiple with archival inkjet, 2011 Edition 50 45 x 95 x 18.5 cm / 17¾ x 37½ x 7½ in



Rolleiflex Hand-painted multiple with archival inkjet, 2011 Edition 35 52 x 54.5 x 18.5 cm / 20½ x 21½ x 7½ in



Show Hand-painted multiple with archival inkjet, 2011 Edition 50 43 x 88 x 18 cm / 17 x 34¾ x 7¼ in



Picassos Hand-painted multiple with archival inkjet, 2012 Edition 50 46 x 81 x 18.5 cm / 18¼ x 32 x 7½ in



Venetian Hand-painted & photographic multiple with archival inkjet, 2012 Edition 50 43 x 88 x 18 cm / 17 x 34¾ x 7¼ in



Handy Hand-painted multiple with archival inkjet, 2012 Edition 50 44 x 107 x 20 cm / 17½ x 42¼ x 8 in



My Room Hand-painted multiple with archival inkjet, 2012 Edition 50 45 x 102 x 19 cm / 17 $\frac{3}{4}$ x 40 $\frac{1}{4}$ x 8 in



Remarkable Hand-painted multiple with archival inkjet, 2013 Edition 50 45 x 95.5 x 22 cm / 17 $\frac{3}{4}$ x 37 $\frac{3}{4}$ x 8 $\frac{3}{4}$ in



Moving Hand-painted multiple with archival inkjet, 2013 Edition 50 45.5 x 90 x 17.5 cm / 18 x 35½ x 7 in



Variety Hand-painted multiple with archival inkjet, 2013 Edition 50 45 x 100 x 16 cm / 17¾ x 39½ x 6½ in



Pablo Hand-painted multiple with archival inkjet, 2013 Edition 40 52.5 x 117.5 x 20 cm / 20 ½ x 46 ¼ x 8 in



Popular Hand-painted multiple with archival inkjet, 2014 Edition 50 45 x 100 x 17 cm / 17 ¾ x 39 ½ x 6 ¾ in



Floating Hand-painted multiple with archival inkjet, 2014 Edition 50 45 x 53 x 16 cm / 17 $\frac{3}{4}$ x 21 x 6 $\frac{1}{4}$ in



Loving Hand-painted multiple with archival inkjet, 2014 Edition 50 45 x 53 x 16 cm / 17 $\frac{3}{4}$ x 21 x 6 $\frac{1}{4}$ in



Booking Hand-painted multiple with archival inkjet, 2014 Edition 50 45 x 53 x 16 cm / 17 ¾ x 21 x 6 ¼ in



Dandy Hand-painted multiple with archival inkjet, 2014 Edition 40 52.5 x 111.5 x 21.5 cm / 20 ½ x 44 x 8 ½ in



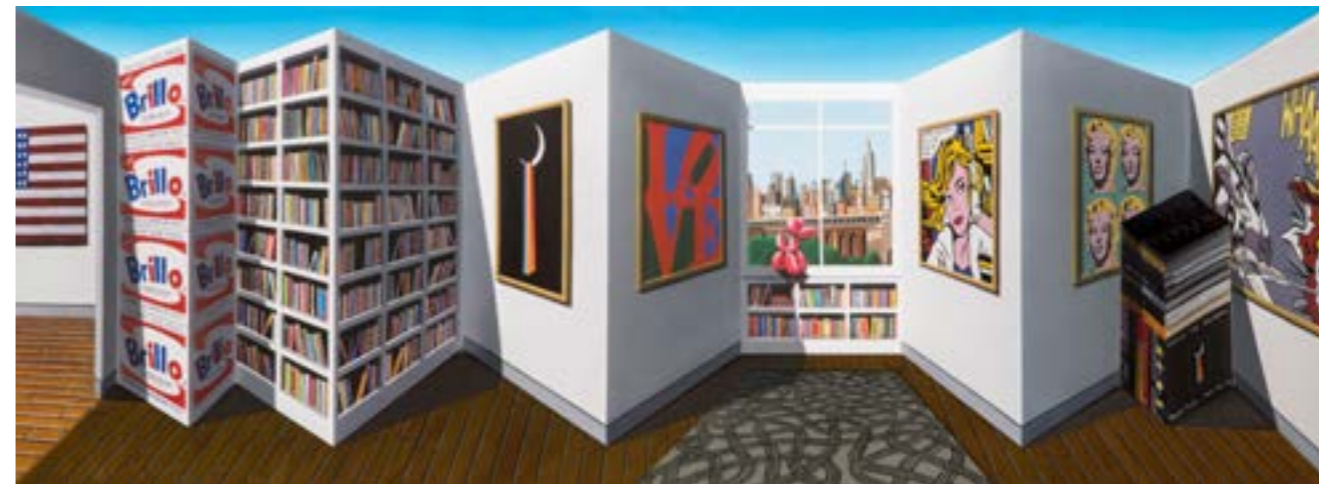
Popper Hand-painted multiple with archival inkjet, 2014 Edition 50 45 x 101 x 17.5 cm / 17 $\frac{3}{4}$ x 39 $\frac{3}{4}$ x 7 in



Palazzi Hand-painted multiple with archival inkjet, 2015 Edition 50 44 x 96.5 x 16 cm / 17 $\frac{1}{2}$ x 38 x 6 $\frac{1}{4}$ in



Bookends Hand-painted multiple with archival inkjet, 2015 Edition 50 63.5 x 89 x 17 cm / 25 x 35 x 6 ¾ in



Popular Hand-painted multiple with archival inkjet, 2015 Edition 50 46 x 102.5 x 17.5 cm / 18 x 40 ½ x 7 in



Amsterdam Hand-painted & photographic multiple with archival inkjet, 2015 Edition 50 45 x 53 x 16 cm / 17 $\frac{3}{4}$ x 21 x 6 $\frac{1}{4}$ in



Silvery Hand-painted & photographic multiple with archival inkjet, 2015 Edition 50 52.5 x 111.5 x 21.5 cm / 20 $\frac{1}{2}$ x 44 x 8 $\frac{1}{2}$ in



Robot Hand-painted multiple with archival inkjet, 2015 Edition 50 51 x 52 x 15.5 cm / 20 x 20 ½ x 6 in



Corner Hand-painted multiple with archival inkjet, 2015 Edition 50 45 x 53 x 16cm / 17 ¾ x 39 ¾ x 6 7/8 in



America Hand-painted multiple with archival inkjet, 2016 Edition 50 45 x 101 x 17.5cm / 17 ³/₄ x 39 ³/₄ x 6 ⁷/₈ in



Great Wall Hand-painted & photographic multiple with archival inkjet, 2016 Edition 50 45 x 131 x 16 cm / 18 1/8 x 44 1/2 x 6 1/4 in



Jazz Hand-painted multiple with archival inkjet, 2016 Edition 50 45 x 91 x 20.5cm / 17 ³/₈ x 35 ⁷/₈ x 8 ¹/₈ in



Peggy Hand-painted & photographic multiple with archival inkjet, 2016 Edition 50 45 x 111 x 22 cm / 17 ³/₈ x 43 ³/₈ x 8 ⁵/₈ in



Beyeler Hand-painted multiple with archival inkjet, 2016 Edition 50 45 x 90 x 18 cm / 17 ³/₄ x 35 ³/₈ x 7 ¹/₈ in



Serenissima Hand-painted & photographic multiple with archival inkjet, 2016 Edition 50 52 x 107 x 20 cm / 20 ¹/₂ x 42 ¹/₈ x 6 ³/₄ in



Silver Hand-painted & photographic multiple with archival inkjet, 2017 Edition 50 46 x 58 x 17 cm / 18 ³/₄ x 22 ³/₄ x 6 ³/₄ in



Robotski Hand-painted multiple with archival inkjet, 2017 Edition 50 45 x 100 x 16 cm / 17 ³/₄ x 39 ³/₈ x 6 ³/₄ in



Palazzo Hand-painted & photographic multiple with archival inkjet, 2017 Edition 50 63 x 78 x 21 cm / 24 ³/₄ x 30 ³/₄ x 8 ¹/₄ in



Collection Hand-painted & photographic multiple with archival inkjet, 2018 Edition 50 44 x 96 x 13 cm / 17 ³/₈ x 37 ³/₄ x 5 ¹/₈ in



Surreal Hand-painted multiple with archival inkjet, 2018 Edition 50 46 x 90 x 18.5 cm / 18 ¹/₈ x 35 ³/₈ x 7 ¹/₄ in



Lagoon Hand-painted multiple with archival inkjet, 2018 Edition 75, 63.5 x 89 x 17 cm / 25 x 35 ¹/₈ x 6 ³/₄ in



Banksy Hand-painted multiple with archival inkjet, 2018 Edition 100 44 x 102 x 17 cm / 17 ³/₈ x 40 ¹/₈ x 6 ³/₄ in



Poppish Hand-painted multiple with archival inkjet, 2019 Edition 75 46 x 102 x 17.5 cm / 18 ¹/₈ x 40 ¹/₈ x 6 ⁷/₈ in



Palazzina Hand-painted multiple with archival inkjet, 2019 Edition 75 46 x 62 x 17 cm / 18 ¹/₈ x 24 ³/₈ x 6 ³/₄ in



Banksee Hand-painted multiple with archival inkjet, 2019 Edition 75 45.5 x 115 x 31 cm / 21 ⁷/₈ x 45 ¹/₄ x 12 ¹/₄ in

PATRICK HUGHES

1939 Born, Birmingham

SOLO EXHIBITIONS

1961	Portal Gallery, London	1985	Mendelson Gallery, Pittsburgh, USA
1963	King Street Gallery, Cambridge	1986	Hereford City Art Gallery, Hereford
1965	Portal Gallery, London	1988	Angela Flowers Gallery, London
1970	Hanover Gallery, London	1989	<i>Studio Show</i> , London (Watercolours)
1971	Angela Flowers Gallery, London	1990	<i>Studio Show</i> , London (Watercolours)
1973	Angela Flowers Gallery, London	1991	Salthouse Gallery, St. Ives, Cornwall
1976	Angela Flowers Gallery, London	1992	Angela Flowers Gallery, London
	Jordan Gallery, London	1993	<i>50 Watercolours</i> , Dean Clough Art Gallery, Halifax
	Wills Lane Gallery, St. Ives, Cornwall	1994	<i>Fifteen Years of Prints 1973-1988</i> , Flowers East, London
1977	Newlyn Orion Galleries, Newlyn	1995	Flowers East, London
1978	Angela Flowers Gallery, London	1996	Worthing Museum and Art Gallery
	Tom Caldwell Gallery, Belfast		Northern Centre for Contemporary Art, Sunderland
	Tom Caldwell Gallery, Dublin		Flowers East, London
	Gallery 39, Manchester	1997	<i>Beyond the Rainbow</i> , Flowers East, London
1979	Penwith Galleries, St. Ives, Cornwall		<i>Made in Perspective</i> , Flowers East at London Fields, London
	Limited Editions, London		<i>The Shadow of War and Other Works</i> , Angela Flowers Gallery, London
1980	Alberta College of Art, Canada		<i>Vanishing Points</i> , City Art Galleries, Manchester
1981	Angela Flowers Gallery, London		<i>Retroperspectives</i> , Flowers East at London Fields, London
	Mendelson Gallery, Pittsburgh, USA		Belloc Lowndes Fine Art, Chicago
	Gallery 39, Manchester		<i>Supersperspective</i> , Flowers East at London Fields, London
1983	Angela Flowers Gallery, London		<i>Patrick Hughes at Susan Kasen Summers</i> , New York
	Bede Gallery, Jarrow		Deutsche Museum, Munich, Germany
	Edward Weston Galleries, New York		Lexus Centre, Jeddah, Saudi Arabia
			<i>Studio Show</i> , London

1998	<i>Reverspective</i> , Flowers East at London Fields, London
	<i>Patrick Hughes Multiples</i> , Belloc Lowndes, Chicago
	<i>Perspectivity</i> , Flowers West, Santa Monica, California
1999	<i>Perverspective</i> , Flowers East at London Fields, London
	Gallery of Modern Art, Glasgow
	<i>The Movies</i> , Flowers West, Santa Monica, California
2000	<i>Deeperspective</i> , Flowers East at London Fields, London
	Susan Duval Gallery, Aspen, Colorado
	<i>Illusions</i> , Louis K Meisel, New York
	Museum of Science and Industry, Chicago
	<i>Multiple Perspectives</i> , Belloc Lowndes Fine Art, Chicago
	<i>Improerspective</i> , Flowers West, Santa Monica
2001	<i>Reverse Perspectives</i> , Mira Godard Gallery, Toronto
	<i>Properspective</i> , Flowers East, London
	Park Ryu Sook Gallery, Seoul, Korea
	Flowers Central, London
	<i>Recent Works</i> , Louis K Meisel, New York
	<i>Hypersperspective</i> , Flowers West, Santa Monica
	Flowers East at London Fields, London
2002	<i>Certain Realities</i> , Mira Godard Gallery, Toronto, Canada
	Flowers East at London Fields, London
	<i>Riperspective</i> , Birmingham Museum & Art Gallery, Birmingham, England
	Belloc Lowndes Fine Art, Chicago
2003	<i>Whoppersperspective</i> , Flowers East, London
	<i>Reverse Perspectives</i> , Mira Godard Gallery, Toronto, Canada

2004	<i>Percepspective</i> , Artower, Athens
	<i>Experspective</i> , Flowers West, Santa Monica
	Park Ryu Sook Gallery, Seoul, Korea
	Jo Hyun Gallery, Korea
	<i>Doors Etc</i> , Flowers New York
	<i>Art Chicago</i> , Chicago
	<i>Reverspectives</i> , Galerie Vieleers, Amsterdam
	Flowers Central, London
	<i>Reverspective</i> , Dennos Museum Center, Midland, Michigan
	<i>Reverspective</i> , Susan Duval Gallery, Aspen, Colorado
2005	<i>Persuasivespective</i> , Louis K Meisel, New York
	<i>Escaperspective</i> , Keller & Greene Gallery, Los Angeles
	<i>Imperspective</i> , Mendelson Gallery, Pittsburgh
	<i>Impossible</i> , Flowers Graphics, London
2006	<i>Perplexerspective</i> , Flowers New York
	<i>Permanentspective</i> , Flowers East, London
	Park Ryu Sook Gallery, Seoul, Korea
	<i>Zuperdupersperspective</i> , Birmingham Museum and Art Gallery, Birmingham, England
	American Institute of Physics, Washington DC
	<i>Shaperspective</i> , Scott Richards Contemporary Art, San Francisco
2007	Galerie Vieleers, Amsterdam
	<i>Grand Canals</i> , Flowers Central, London
	Louis Meisel Gallery, New York
	<i>Perspective Perpétuelle</i> , Galerie Lelia Mordoch, Paris

2008 *Aspenspective*, Sardella Fine Art, Aspen, Colorado
Perspectrum, Flowers, New York
Prints In Between, Flower Graphics, London
Galerie Boisseree, Cologne
Reverspective versus Perspective, Nicolas Metivier
Gallery, Toronto
Perspectivirtuoso, Flowers East, London
Superperspectivision, Scott Richards
Contemporary Art, San Francisco
2009 *Patrick Hughes and Mark Mizgala*, Winsor Gallery,
Vancouver
Perspective, Harvey Nichols, Dubai
The Genius of Perverspective, Marigold Fine Art,
New Delhi
Patrick Hughes, Bel Air, Geneva
Patrick Hughes, Intercontinental Hotel, London
Perfectspective, Flowers Central, London
2010 *Patrick Hughes*, Park Ryu Sook Gallery, Korea
Perspective and Perception, Flowers, New York
Galerie des Lices, St. Tropez
2011 *50 Years in Show Business*, Flowers, London
New Works, Flowers, London
2012 *Studiospective*, Reverspective, London
Smallerspectives, Flowers, New York
Perspectivariations, Winsor Gallery, Vancouver
Multispectives, Flowers Gallery, London
2013 *Superspectivism*, Flowers Gallery, London
2014 *New Reverspectives*, Flowers Gallery, London
Reading Paradox, Hamni Gallery, Seoul
Gallery 360, Northeastern University, Boston

2015 *Studiospective*, Flowers Gallery, New York
Moving Space, Panorama Mesdag, The Hague
Reverspectives, Axel Pairon Summer Gallery, Knokke
Moving Spaces, Osthaus Museum, Germany
Perspective Anew, Flowers Gallery, New York
Opperspective, Scott Richards Contemporary Fine Art,
San Francisco
Hughesual Perspective, Galerie Boisserée, Germany
Patrick Hughes, Winsor Gallery, Canada
2016 *Patrick'spective*, 45 Park Lane, London
Reverspectives, The Gallery at Dauntsey's, West
Lavington, Wiltshire
Perspectivision, Flowers Gallery, Cork Street, London
Views of Hughes: Selected Multiples, Winsor Gallery,
Vancouver
2017 *Forwards to Backwards*, Leeds College of Art, Leeds
Perspective in Perspective, Flowers Gallery, New York
Perspectiviews, Persterer Contemporary Fine Art,
Zurich

PUBLIC COLLECTIONS

Arts Council of Great Britain
Apax Partners Holdings Ltd
Birmingham Museums and Art Galleries
BlackRock, London
Deutsche Bank AG, London
Deutsche Bibliothek, Frankfurt
Centrica Plc

CNA Insurance, Chicago
Cox Insurance Holdings PLC
Denver Art Museum
Dudley Art Gallery
Education Academy, The Royal London Hospital
Ferens Art Gallery, Hull
Gallery of Modern Art, Glasgow
Glasgow Museum and Art Gallery
Goldsmiths Hall
Goldman Sachs International
Hanjin Shipping Co., Seoul
Hereford City Art Gallery
Institute of Philosophy, University of London
Isle of Man Arts Council
J Walter Thompson
Kunstlicht in de Kunst
Leeds City Art Gallery
Leeds University
Leicestershire Educational Authority
Lloyds TSB Group plc, London
Madison Museum of Contemporary Art, Wisconsin
Manchester City Art Gallery
Moorfields Eye Hospital
Museum of Fine Arts, Boston
Nasher Museum of Art at Duke University, North Carolina
Northeast University, Boston
Norwich Castle Museum & Art Gallery
Phillip Morris Collection, New York
Procter & Gamble, Surrey & Cincinnati
POPA Porrentruy Optical Art

PwC PricewaterhouseCoopers
Rexifield CC, Woogin Group, Seoul
Royal National Institute for the Blind
Sheffield City Art Gallery
Swire Group, Hong Kong
Tate
The British Academy
The British Council
The British Library
The Contemporary Art Society
The Louisiana Museum, Denmark
Time Out Group, London
Victoria & Albert Museum
University of Edinburgh
University of Houston, Texas
University College of Wales, Aberystwyth
University of Edinburgh
University of Houston
Westdeutsche Landesbank, London
Whitworth Art Gallery
Wolverhampton City Art Gallery
Würth Museum, Germany
ZKM - Centre for Art and Media Karlsruhe

FLOWERS

82 Kingsland Road
London E2 8DP
T +44 (0)20 7920 7777
info@flowersgallery.com

21 Cork Street
London W1S 3LZ
T +44 (0)20 7439 7766
info@flowersgallery.com

529 West 20th Street
New York NY 10011
T +(1) 212 439 1700
newyork@flowersgallery.com

www.flowersgallery.com
www.patrickhughes.co.uk

© 2018 Patrick Hughes, Murray McDonald and Flowers Gallery

All multiples are presented, mounted and glazed in a perspex case,
each signed and numbered by the artist.

Printed by 107 Workshop 1996-2011 and Andrew's Print Works 2012 to the present day.

Coordination: Amie Conway
Photography: Antonio Parente

