

RICHARD SMITH

INTERSECTIONS

16 November 2022 - 18 February 2023

Private View, Tuesday 15 November, 6-8PM

82 Kingsland Road,
London E2 8DP

T: 020 7920 7777
press@flowersgallery.com
www.flowersgallery.com

Flowers Gallery is delighted to present an exhibition of works by British artist Richard Smith CBE (1931 – 2016). Recognised as one of the most influential painters of his generation, Smith's work of five decades evades precise categorisation, with an expansive abstract painterly style very much his own.

The exhibition coincides with the launch of a major new publication *Richard Smith: Artworks 1954-2013*, with essays by David Alan Mellor, Chris Stephens and Alex Massouras. This new study is intended to reignite discourse around this diverse artist, whose impressive oeuvre is fertile territory for a new reassessment. Also concurrently on view is *Richard Smith: Kites at the Edge* Art Centre, University of Bath until 17 December, 2022.

This exhibition presents a survey of works from 1965 to 2009, focusing on intersections of colour, form and material construction. Included are a selection of Smith's critically acclaimed paintings on three dimensional canvases from the 1960s, including *A Whole Year and Half a Day VIII* (1966), formerly exhibited at his solo exhibition for the British Pavilion at the Venice Biennale in 1970. During this period Smith created monumental sculptural shaped canvases, which explored a radical new tension between volume, colour and surface. In *A Whole Year and Half a Day VIII*, the canvas appears to unfurl playfully from the wall, while in *Triptych*, 1965, three vivid carton-like panels protrude into the space of the gallery, recalling the bold impact of advertising hoardings.

Other works take this experimentation with shaped supports in new directions. In works such as *Maryland* (1972), and *A Dark Present* (1972) horizontal and vertical tapes intersect with the surface of the canvas. Here, Smith's interest in the hidden grid-like warp and weft of the canvas is accented by its interwoven construction at an enlarged scale.

Also presented are a selection of Smith's works on paper which provide enriching further insights into the paintings around them. *Purple, Red and Green Intersections* (1969) exemplifies the ways in which Smith uses bold colour to delineate forms, while also employing sculptural strategies such as cuts and folds, creating a striking sense of depth and structure in their two-dimensional surfaces.

For further information and more images, please contact Ellie Jeans: ellie.jeans@flowersgallery.com / Hannah Hughes: press@flowersgallery.com, +44 (0) 207 920 7777



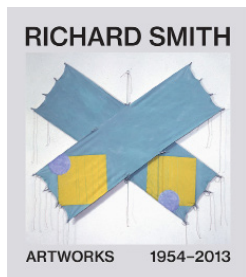
A Whole Year and Half a Day VIII, 1966,
acrylic on canvas with aluminum, 152.4 x 152.4 x 30 cm

ABOUT RICHARD SMITH

Born in Hertfordshire in 1931, Richard Smith studied at the Royal College of Art, London from 1954-57. In 1959 Smith was awarded the prestigious Harkness Fellowship which facilitated his move to New York, where he had his first solo show at Green Gallery. Smith had a retrospective exhibition at the Whitechapel Gallery in 1966, while still in his thirties, and participated in some of the most important exhibitions of his time, such as *Place* at the ICA in 1959; *Situation* at RBA Galleries in 1960; and *Painting and Sculpture of a Decade* at Tate in 1964. After being awarded the Grand Prize at the 9th São Paulo Biennial in 1967 and participating in Documenta IV, Kassel in 1968, Smith represented Britain at the XXXV Venice Biennale in 1970, and was awarded the CBE in 1971. A major retrospective titled *Seven Exhibitions 1961-75* was held at Tate in 1975. His work is held in the public collections of the Arts Council of Great Britain; The British Museum, London; Metropolitan Museum of Art, New York; the Museum of Modern Art, New York; Tate, London; Victoria and Albert Museum, London; Walker Art Center, Minneapolis; the Whitney Museum of American Art, New York; MIT, Boston; Philadelphia Museum of Art; Museum of Contemporary Art, Chicago; Hirshhorn Museum and Sculpture Garden, Washington, DC.

Opening Hours: Tuesday- Saturday 11am - 6pm or by appointment.

Image credits: All images © Richard Smith Estate, courtesy of Flowers Gallery.



Richard Smith: Artworks 1954-2013 is published by The Estate of Francis Bacon Publishing, in association with Thames & Hudson.

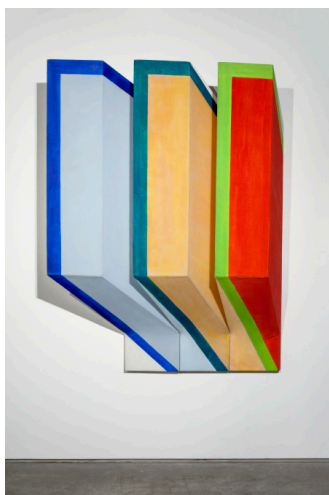
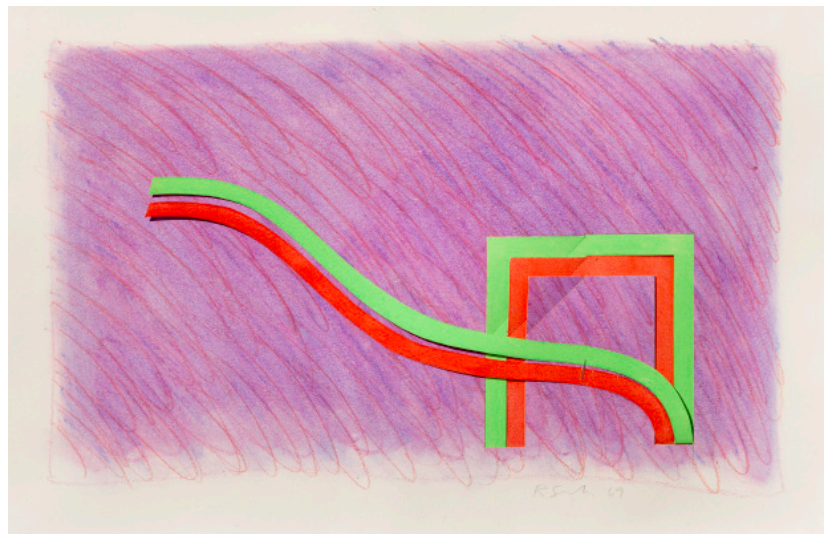
Hardback; 272 pages; UK RRP £60.00

ISBN: 978-0-500-97858-0

27 October 2022

Richard Smith: Kites (28 September – 17 December 2022) is on display at the Edge Art Centre, University of Bath.

www.holburne.org



Clockwise from top left:

Maryland, 1972, acrylic on canvas,
215 x 200 x 37 cm

Purple, Red and Green Intersections, 1969, pastel
and mixed media on paper, 37 x 56 cm

Triptych, 1965, acrylic on shaped canvas (three
parts),
177.8 x 139.7 x 40 cm

Surface I, 2009, acrylic on canvas,
101.6 x 106.68 cm