

WILLIAM CROZIER*A HEIGHTENED VISION OF NATURE, 1977-1980*21 Cork Street
London W1S 3LZ

T: +44 (0)20 7439 7766

27 May - 9 July 2022

Private View Thursday 26 May, 5-8PM

press@flowersgallery.com

www.flowersgallery.com

"Everything I paint comes from what I have seen. There must be an initial visual revelation, a moment of visual understanding of the order, history, passion and human endeavour revealed in a corner of a field, the shadow beneath a wall. The miraculous must be seen to appear, the ordinary must be transformed into the extraordinary eternal."

- William Crozier

Flowers Gallery is pleased to announce an exhibition by William Crozier (1930-2011). This exhibition tracks three of the most pivotal years of Crozier's career, from 1977-1980, a period during which he redefined his voice as a painter.

Glasgow-born artist William Crozier's work reflected an abiding concern for depicting the complexity of human experience. In his early career his painting was influenced by his introduction to existential philosophy in Paris, and up until the mid 1970s his work reflected anxieties in the aftermath of the Second World War, often including skeletal figures.



Watermeadows, 1977, oil on canvas, 210 x 227 cm

In striking contrast, in 1977, Crozier embarked on a body of work in which the images of this anxiety were notably absent. During this time, Crozier painted the landscape on the outskirts of Winchester, in the south of England, resulting in a group of paintings collectively known as the *Watermeadows*. Paintings such as *Swift's Lake* and *Swift's Water* immerse the viewer in an urgent deluge of colour and light, evoking the dynamic sensation of a living landscape.

Shortly after, Crozier spent the summer of 1979 in New York. There, in the midst of an oppressive heatwave, he painted vivid cityscapes in parks and squares at dusk, absorbed by an environment that he felt was "*wild and dangerous and inhospitable*". By the end of this period, Crozier wrote that New York "*detonated*" within him a clarity and excitement for European painting that resonated in works such as *Gramercy Park*.¹

The *Watermeadows* were exhibited in 1978 at the Serpentine Gallery, London, and all of the paintings in this exhibition were last seen on public display in 1985. The exhibition also includes related drawings from this period from the artist's archive, which have never before been on view.

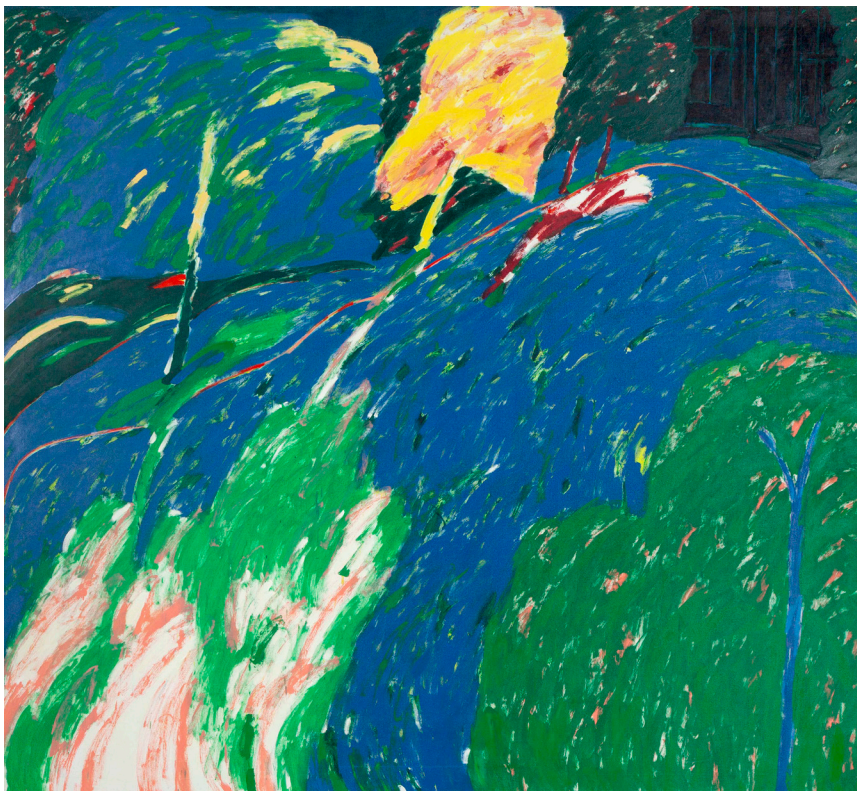
For more information please contact Hannah Hughes: press@flowersgallery.com

ABOUT WILLIAM CROZIER

William Crozier, (1930-2011), was born in Scotland and educated at Glasgow School of Art from 1949-53. On graduating he settled in London where he established a reputation as one of the most avant-garde artists of his time through solo exhibitions at the ICA, Drian and Tooth Galleries. Crozier's peripatetic life took him to Dublin and Paris in the 1950s, then to Andalusia in 1963, locations which were to prove central to his development as an artist. Always based in the UK, he became an Irish citizen in 1973 and from the early 1980s onwards he had a long and successful exhibiting career, dividing his time between West Cork and Hampshire. He took pride in describing himself as a European citizen and allied himself, and his work consciously with European art and thought. He represented the UK and Ireland overseas, and in 2017 the Irish Museum of Modern Art mounted a two-part retrospective of his work in Dublin and Cork. His work is in many prominent collections including Arts Council of England, London; Scottish National Gallery of Modern Art, Edinburgh; European Parliament, Brussels; Carnegie Museum of Art, Pittsburgh; National Gallery of Victoria, Melbourne; National Gallery of Canada; Ottawa; and the Victoria and Albert Museum, London, among others. Since Crozier's death in 2011 his work has received increasing critical attention, with acquisitions by Imperial War Museum, London; Tate, London; and the National Gallery of Ireland, Dublin.



William Crozier, Winchester, 1980



Gramercy Park, 1979-80, oil on canvas, 235 x 257 cm

NOTES TO EDITORS

All images © The Estate of William Crozier, courtesy of Flowers Gallery.

Exhibition opening hours:
Tuesday - Saturday 11am - 6pm.

1. William Crozier, exhibition catalogue, Swiss Cottage Library, 1980.