

TAI SHAN SCHIERENBERG

FIGURING THE LANDSCAPE

21 CORK STREET
LONDON W1S 3LZ

T: +44 (0)20 7439 7766

2 June - 10 July 2021

press@flowersgallery.com
www.flowersgallery.com

"During this past year, while the great outdoors has been denied to us, I felt the need to tackle nature in my work again, with a view to investigating our deep-seated need for a connection with it, our romantic idealisation of it, and the myths of its power as a panacea."

- Tai Shan Schierenberg

Flowers Gallery is pleased to present an exhibition of new works created over the last 18 months by British painter Tai Shan Schierenberg.

In this exhibition, nature is represented in a series of remembered landscapes and seascapes, which appear desolate and unpopulated or sparsely inhabited by lone figures. Schierenberg describes this sequence of works as *"self-portraits of sorts,"* creating archetypal characters and metaphors within the landscape to navigate personal experience.

In paintings such as *Mirage*, *Bodies of Water* and *No Man is an Island*, reflections in the mirror-like surfaces of lake and ocean suggest states of division or flux. Schierenberg describes these works as contemplating isolation and disconnectedness, while also representing distortions of reality and the nature of illusion.

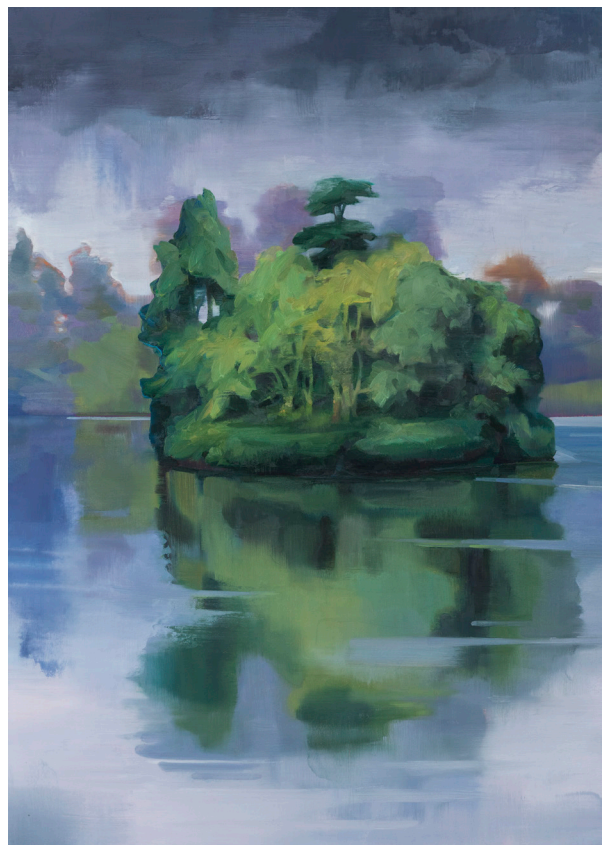
The painting *Ancient Ritual* explores our enduring fascination with fire, making reference to the story of Prometheus from Greek Mythology, and his dangerous gift to humankind. Blazing high into the forest sky, the fire appears to be reaching the very limits of control.

The Past is Another Country depicts a fleeting, shifting landscape as seen through the windows of a car. The vehicle is a recurring motif in Schierenberg's paintings, relating to the artist's peripatetic early childhood spent on the road traversing the landscapes of Europe and North Africa. The fluid experience of movement here suggests the passage and cycle of time continuing throughout the generations, a theme that is also strongly reflected in the lunar tide of *Old Moon*. By equating the rhythms of nature with what he terms the 'seasons' of human experience, Schierenberg raises the question: *"when we turn to nature, do we do so to understand and find ourselves?"*



Ancient Ritual, 2021,
oil on canvas, 180 x 140 cm

For more information and images please contact Hannah Hughes: hannah@flowersgallery.com
+44 (0)20 7920 7777



Captions from left: *No Man is an Island*, 2020, oil on canvas, 140 x 140 cm; *Mirage*, 2021, oil on canvas, 140 x 100 cm

ABOUT TAI SHAN SCHIERENBERG

Born in England in 1962, Tai Shan Schierenberg lives and works in London. He graduated from the Slade School of Art in 1987. In 1989 he won first prize in the National Portrait Gallery's John Player Portrait Award, and was subsequently commissioned to paint Sir John Mortimer for the gallery and further works are held in the museum collection. Notable commissions include Professor Stephen Hawking, Sir John Madejski and a double portrait of Queen Elizabeth II and the Duke of Edinburgh. He was Artist in Residence at West Bromwich Albion football club from 2017-2018 as part of the Channel 4 documentary strand *Artist in Residence*. Schierenberg also regularly appears as a judge on the Sky Arts series' *Landscape Artist of the Year* and *Portrait Artist of the Year*.

NOTES TO EDITORS

Opening Hours: Tuesday - Saturday 11am - 5pm or by appointment.

All images (c) Tai Shan Schierenberg, courtesy of Flowers Gallery.



Bodies of Water, 2021, oil on canvas, 100 x 80 cm