

TAI-SHAN SCHIERENBERG

NEW WORK

17 FEBRUARY - 25 MARCH 2017

21 CORK STREET
LONDON W1S 3LZ

T: 020 7439 7766
WWW.FLOWERSGALLERY.COM

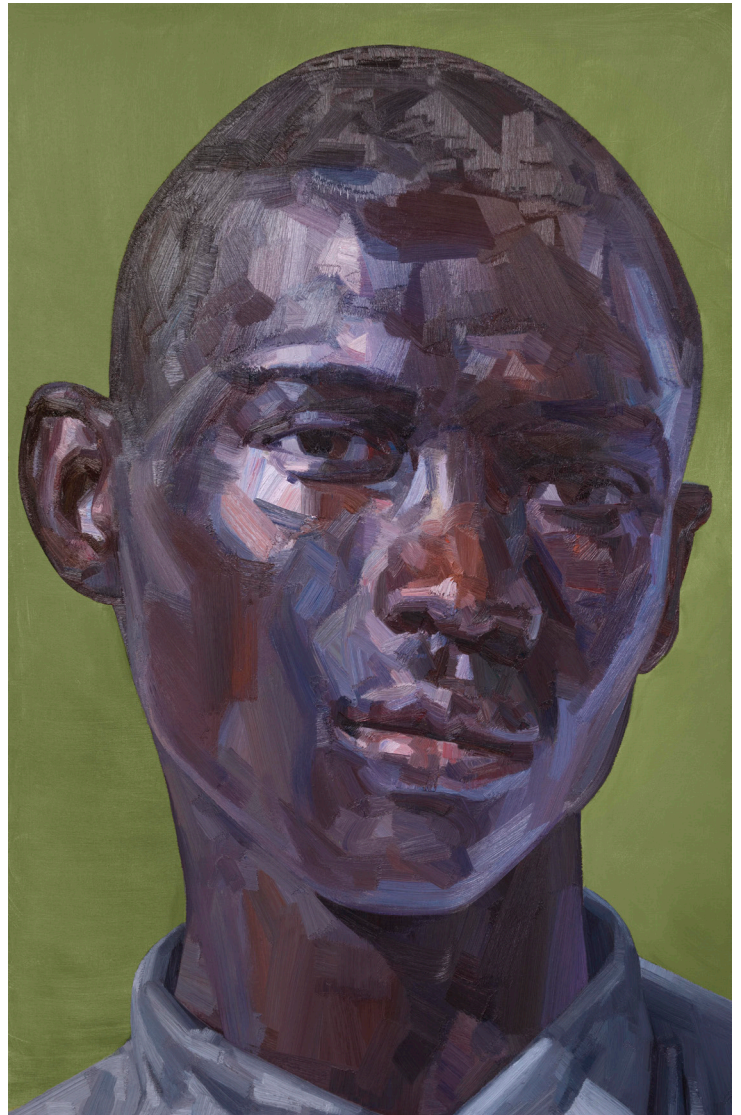
PRIVATE VIEW THURSDAY 16 FEBRUARY 6-8PM

In a new series of works, Tai-Shan Schierenberg pursues his fascination with the symbolic and material potential of the landscape and the human figure, drawing connections between individual works through recurring patterns, rhythms and reflected motifs.

Schierenberg's solidly constructed figurative forms verge on the edge of abstraction, appearing to dissolve at the surface into a painterly syntax of converging brushstrokes, with paint dragged, dripped and scraped to articulate opposing sensory, temporal and spatial encounters. The human body, seen here in the two balancing figures of *Brother and Son* or the simply composed head of *Balthasar*, emerges from an expressive layering of fluidly shifting planes, which simultaneously describe both the material presence of the subject and the physical act of painting.

Paintings such as *Canal Summer Morning* navigate the realm between recognisable views of the landscape and its abstracted shapes and patterns, conveying a sense of architectonic harmony amid the continual flux of nature. Comprising part of a long series of works representing the open and expansive Norfolk landscape, the recent paintings are characterised by their attention to duality and repetition, seen in the reflections in the water in *Morning - Bend in the River*, or the uncanny doubling of natural forms in *Two Bushes, Norfolk*.

New paintings produced on the Suffolk coast in 2016 continue this theme, following sequences of waves as they gather momentum and break against the shore, with fluid passages of paint reflecting the meditative and rhythmic energy of the waveform.



Balthasar, 2017,
Oil on Canvas, 180 x 120 cm

A large painting titled *Quarry Road Winter - Black Forest* presents a further personal symbolism, depicting the solitude of remote woodland paths in southwestern Germany, where Schierenberg spent much of his childhood. Pictured from a low and disorienting perspective, two towering boulders form an almost cathedral-like mirrored structure.

For the first time, Schierenberg will show sculptural works alongside his paintings. A new series of oil paint-encrusted three-dimensional heads, their impasto surfaces created with colours scraped daily from his painting palette, explore a fertile dialogue between painting and sculpture.



Canal Summer Morning, 2016, Oil on Canvas, 45 x 50 cm



Brother and Child, 2016, Oil on canvas, 153cm x 122.5cm



Green Wave, 2016, Oil on Canvas, 60.5cm x 91cm



Black Wave, 2016, Oil on board, 28cm x 35.5 cm

ABOUT TAI-SHAN SCHIERENBERG

Born in England in 1962, Tai-Shan Schierenberg lives and works in London. He graduated from the Slade School of Art in 1987, and in 1989 he won first prize in the National Portrait Gallery's John Player Portrait Award. He was then commissioned to paint Sir John Mortimer for the Gallery. The National Portrait Gallery also holds his portraits of Lord Carrington, Lord Sainsbury, and Seamus Heaney. Other noted commissions include Professor Stephen Hawking, Sir John Madejski and a double portrait of Queen Elizabeth II and the Duke of Edinburgh. His work has been the subject of a solo exhibition at Bradford Museum, UK. Schierenberg also appears as a judge on the Sky Arts series' Landscape Artist of the Year (most recently in 2016) and Portrait Artist of the Year (currently being broadcast).

NOTES TO EDITORS

Opening Hours: Monday - Saturday 10am - 6pm or by appointment

Image credits: All images (c) Tai-Shan Schierenberg, *courtesy of Flowers Gallery, London and New York*

For further information and more images, please contact Hannah@flowersgallery.com / 020 7920 7777