

Carol Robertson, *Edzná 26*, 2014, Monoprint , 44.5 x 43.5 cm / 17 1/2 x 17 in

## THE PRINT SHOW

12 NOVEMBER 2014 – 3 JANUARY 2015

PRIVATE VIEW  
TUESDAY 11 NOVEMBER, 6-8PM

FLOWERS GALLERY  
21 CORK STREET  
LONDON W1S 3LZ

T: +44 (0)20 7439 7766  
F: +44 (0)20 7439 7733

[WWW.FLOWERSGALLERY.COM](http://WWW.FLOWERSGALLERY.COM)

Flowers Graphics is pleased to announce a group show of limited edition prints and monoprints by established gallery artists from 12 November-03 January at Flowers Gallery, Cork Street.

Featuring works from the archives to the present day, it will showcase striking new publications by Glen Baxter, Bernard Cohen, Tom Hammick, Nicola Hicks, Lucy Jones, Freya Payne, Carol Robertson, Michael Sandle, Richard Smith and Tai-Shan Schierenberg.

Each limited edition work is the result of a close collaboration between the artist and a specially selected master printer. Notable partnerships include Richard Smith's aquatints, printed with Maurice Payne in New York; Carol Robertson's monoprints produced with Kip Gresham at Cambridge Print Studio; and Bernard Cohen's lithographs from his *Place Games* series, hand printed with Shark's Inc., with whom he has been producing prints since 1969.

*"For forty years, Bud Shark has sensitively guided me through those processes. No one will ever work alongside me when I am painting, but Bud Shark's skill and knowledge and imagination have enabled me to perform on a very unique stage."* Bernard Cohen

Carol Robertson will present a selection from her series of 30 new monoprints, entitled *Edzná*, to coincide with her new exhibition *Circular Stories* at Flowers Gallery, Kingsland Road (28 November-10 January). Robertson has made prints using circular motifs following a recent trip to Central America, where she visited Maya archaeological sites in southern Mexico, Guatemala, Honduras and Belize. These mark the significant impact of the exquisitely carved and painted Mayan calendars she encountered during this visit.

## ABOUT FLOWERS GRAPHICS

Flowers Graphics was established in the early 1980s to encourage gallery artists, who may or may not have been print-makers, to produce works in the medium. Running a varied and challenging publishing programme, Flowers Graphics works with various master printers across the country to produce editions of prints by gallery artists. Over the years this has also included publishing works by renowned printmakers Tim Mara, Stephen Chambers and Freya Payne.

The recently reinstated Flowers Print of the Month initiative makes a specially selected fine art print available to purchase at a reduced price for the whole month for subscribers to the promotional mailing list. For more information on how to join, contact [graphics@flowersgallery.com](mailto:graphics@flowersgallery.com).

*"A limited edition print is, for many, the ideal way to start a serious art collection. It enables the collector to own artworks produced by well-established artists, which may otherwise be out of their reach."*

– Karen Demuth, Flowers Graphics

## NOTES TO EDITORS

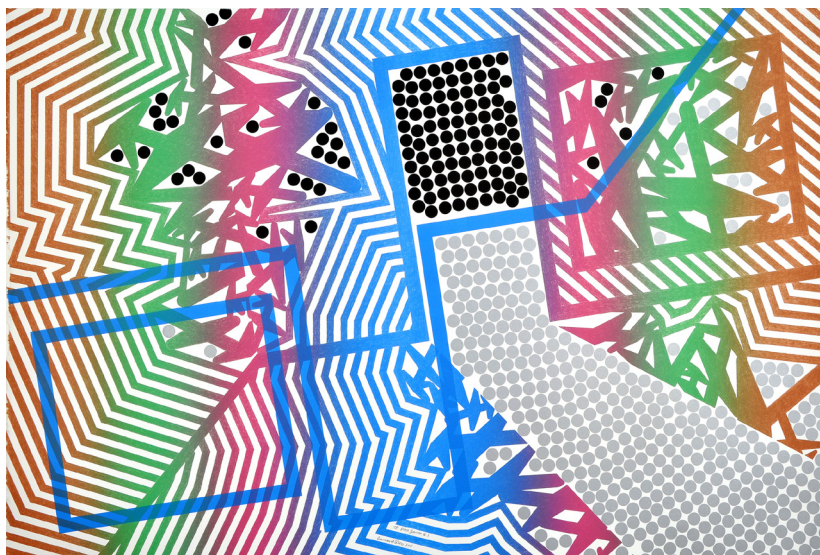
The exhibition will take place at Flowers Gallery, 21 Cork Street, London, W1S 3LZ.  
Tel: +44 (0)20 7439 7766

Opening Hours: Monday - Saturday 10am - 6pm

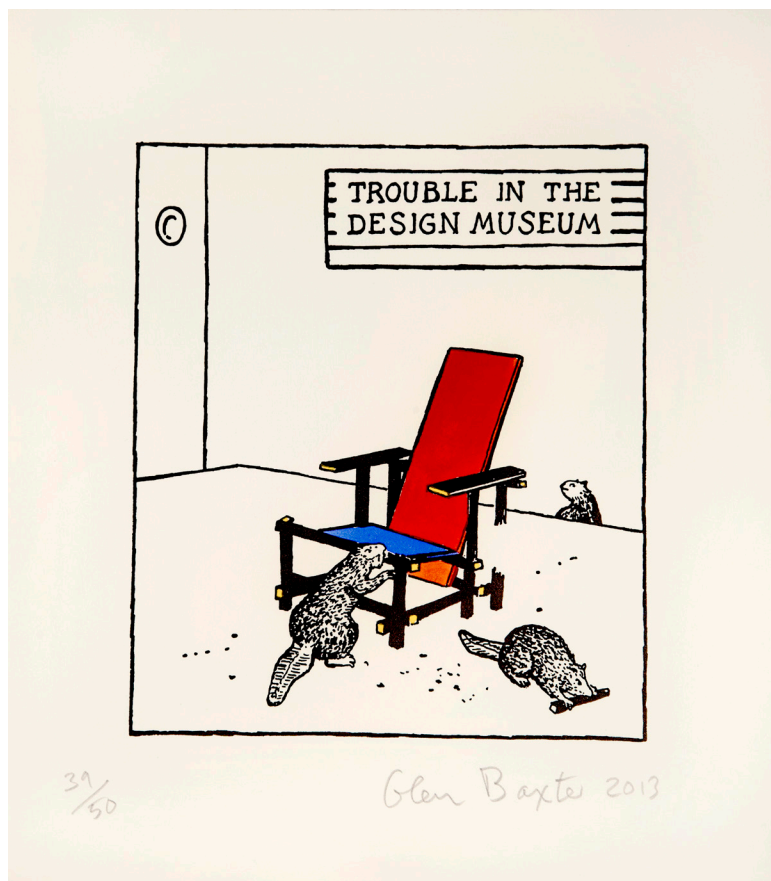
Image credits: *Image courtesy of Flowers Gallery, London and New York*

For further information and images, contact Hannah Hughes on 020 7920 7777 or email [hannah@flowersgallery.com](mailto:hannah@flowersgallery.com)

Please join the conversation with Flowers Gallery on social media:  
Twitter @FlowersGallery  
Facebook @FlowersGalleries  
Instagram @FlowersGallery  
Pinterest @FlowersGallery



Bernard Cohen, *Place Games I*, 2011, Lithograph, 80 x 121.5 cm, 31 1/2 x 47 3/4 in, Edition of 30



Glen Baxter, *Trouble in the Design Museum*, 2013, Letterpress gravure hand tinted, 39 x 35 cm, 15 1/2 x 14 in, Edition of 50