

Peter Howson
Selected Prints



Man with Cigarette, 1982
Lithograph
62.5 x 53.5 cm / 24 5/8 x 21 1/8 in
Edition of 50



Field Mouse, 1986
Screenprint
76 x 56 cm | 30 x 22 1/4 in
Edition of 50

Aberdeen Art Gallery
British Council
British Museum



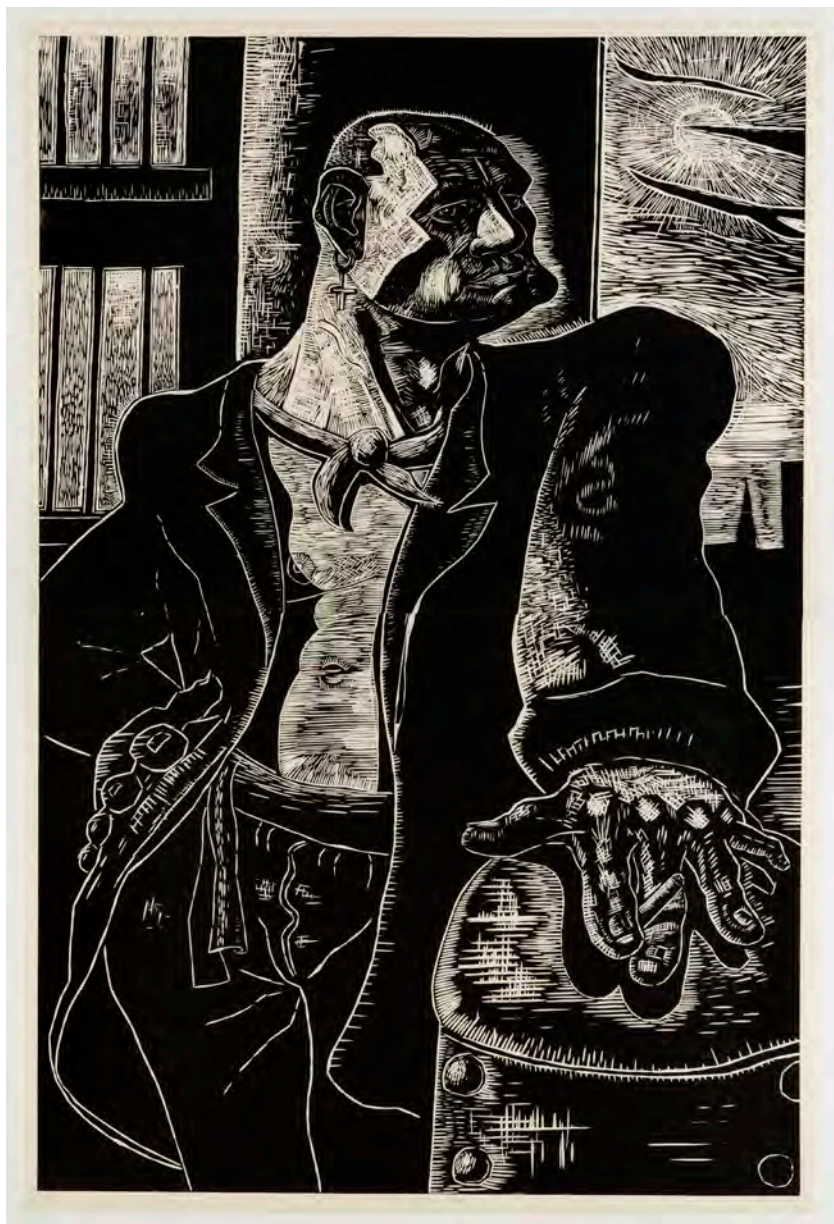
Stag, 1986
Screenprint
76 x 56 cm | 30 x 22 1/4 in
Edition of 50

Aberdeen Art Gallery
British Council
British Museum
Victoria and Albert Museum



Heroic Dossier, 1988
Two part woodcut
183 x 121 cm | 72 1/8 x 47 5/8 in
Edition of 30

British Council
Victoria & Albert Museum

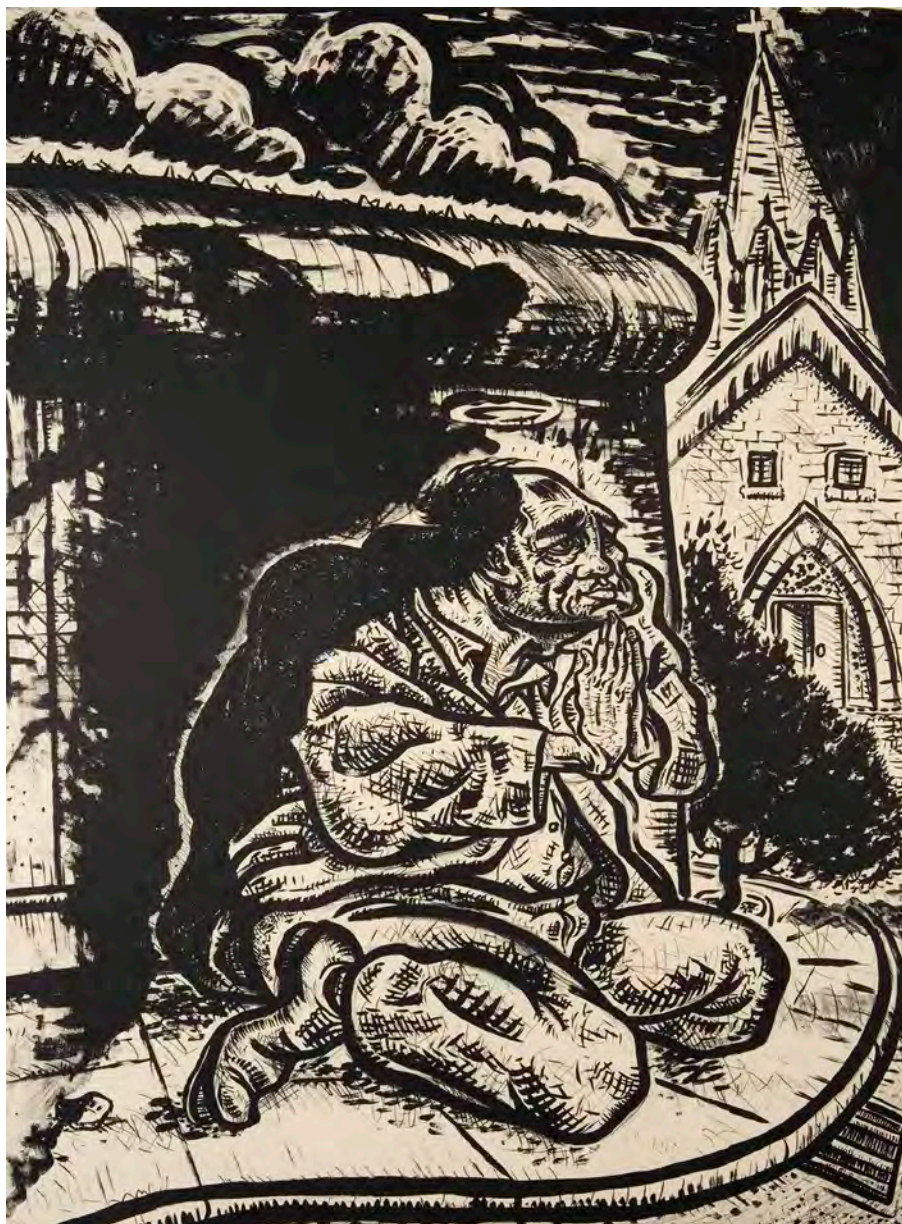


The Noble Dosser, 1988
Two part woodcut
183 x 121 cm / 72 x 47 3/4 in
Edition of 30

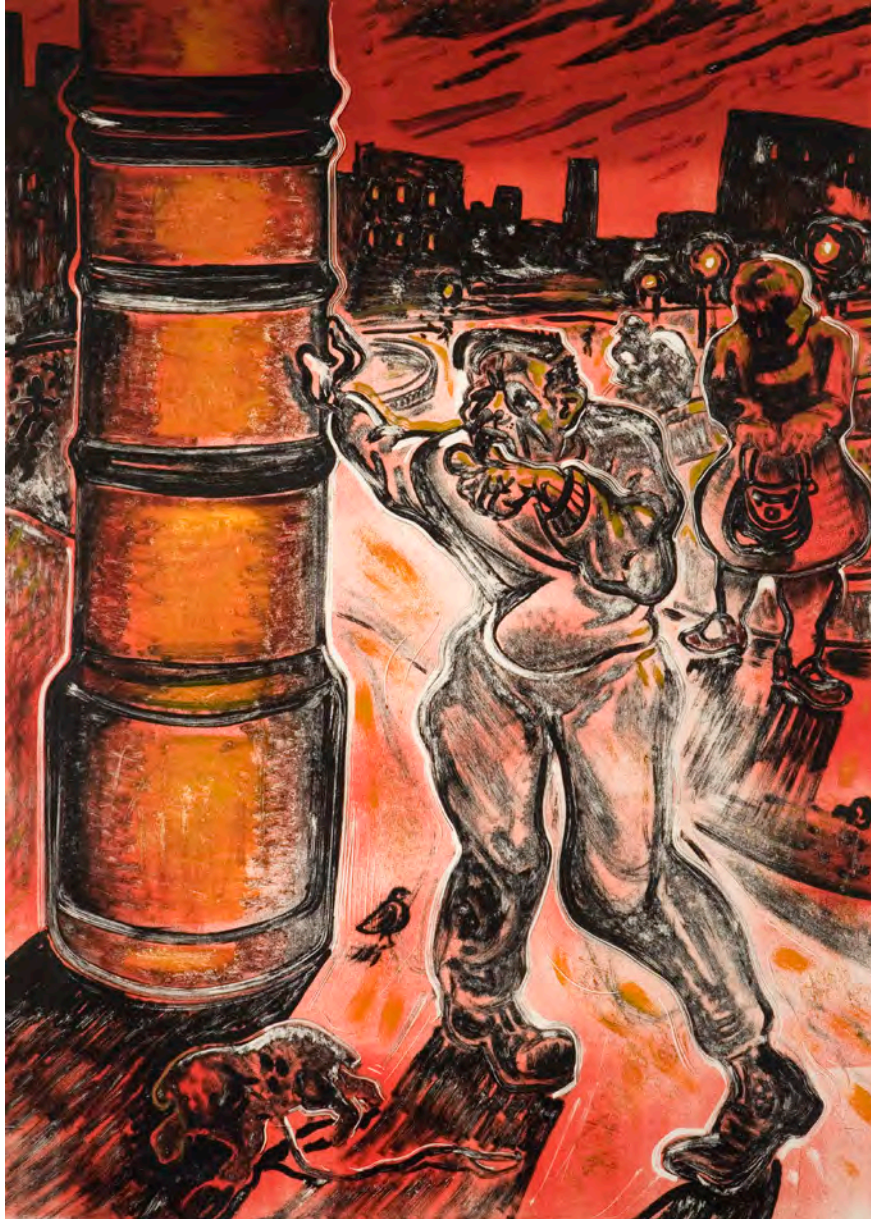
British Council
Tate Gallery



The Noble Dosser, 1987
Lithograph
75 x 56 cm | 29 1/2 x 22 1/4 in
Edition of 50



Praying Dosser, 1987
Lithograph
76 x 56 cm | 30 x 22 1/4 in
Edition of 34



Suppertime, 1987
Monotype
118 x 90 cm | 46 1/2 x 35 1/2 in
Edition of 1

SARACEN HEADS

1987 - 1990

Selection from a portfolio comprising 25 etchings in editions of 30 each

Image size 24 x 33cm / 9 1/2 x 13 in

Paper size 56 x 38 cm / 22 1/4 x 15 in

A portfolio of portraits inspired by characters that Howson encountered at the Saracen's Head pub, located near his studio at the time in the Gallowgate area of Glasgow.

The suite was printed on Vélin Arches Blanc paper between 1987 and 1988 by The Printmakers Workshop, Edinburgh, and published by Flowers Graphics in an edition of 30 plus 10 boxed sets which include an original drawing.



AI, 1988
Etching
56 x 38 cm | 22 x 15 in
Edition of 30



Amanda, 1988
Etching
56 x 38 cm | 22 1/4 x 15 in
Edition of 30

Museum of Modern Art, New York
Tate Gallery, London



Billy, 1988
Etching
56 x 38 cm | 22 1/4 x 15 in
Edition of 30



Bob, 1988
Etching
56 x 38 cm | 22 x 15 in
Edition of 30

Museum of Modern Art, New York
Tate Gallery, London



Cain, 1988
Etching
56 x 38 cm | 22 x 15 in
Edition of 30

Museum of Modern Art, New York



Jimmy, 1987
Etching
56 x 38 cm | 22 x 15 in
Edition of 30

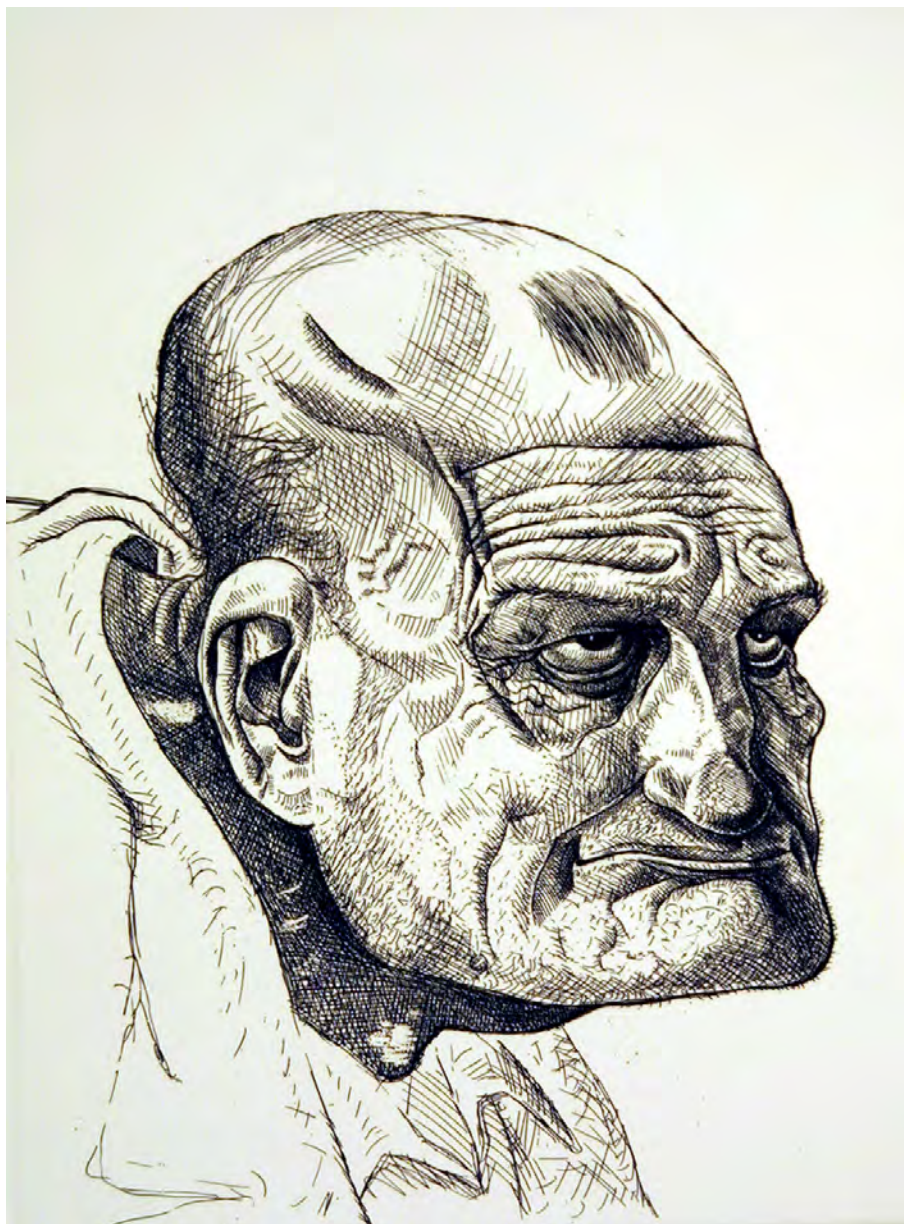


Johnie, 1988
Etching
56 x 38 cm | 22 1/4 x 15 in
Edition of 30

Aberdeen Art Gallery
British Council



Mac, 1988
Etching
56 x 38 cm | 22 x 15 in
Edition of 30



Maxwell, 1987-88
Etching
56 x 38 cm | 22 x 15 in
Edition of 30



Ned, 1988
Etching
56 x 38 cm | 22 1/4 x 15 in
Edition of 30

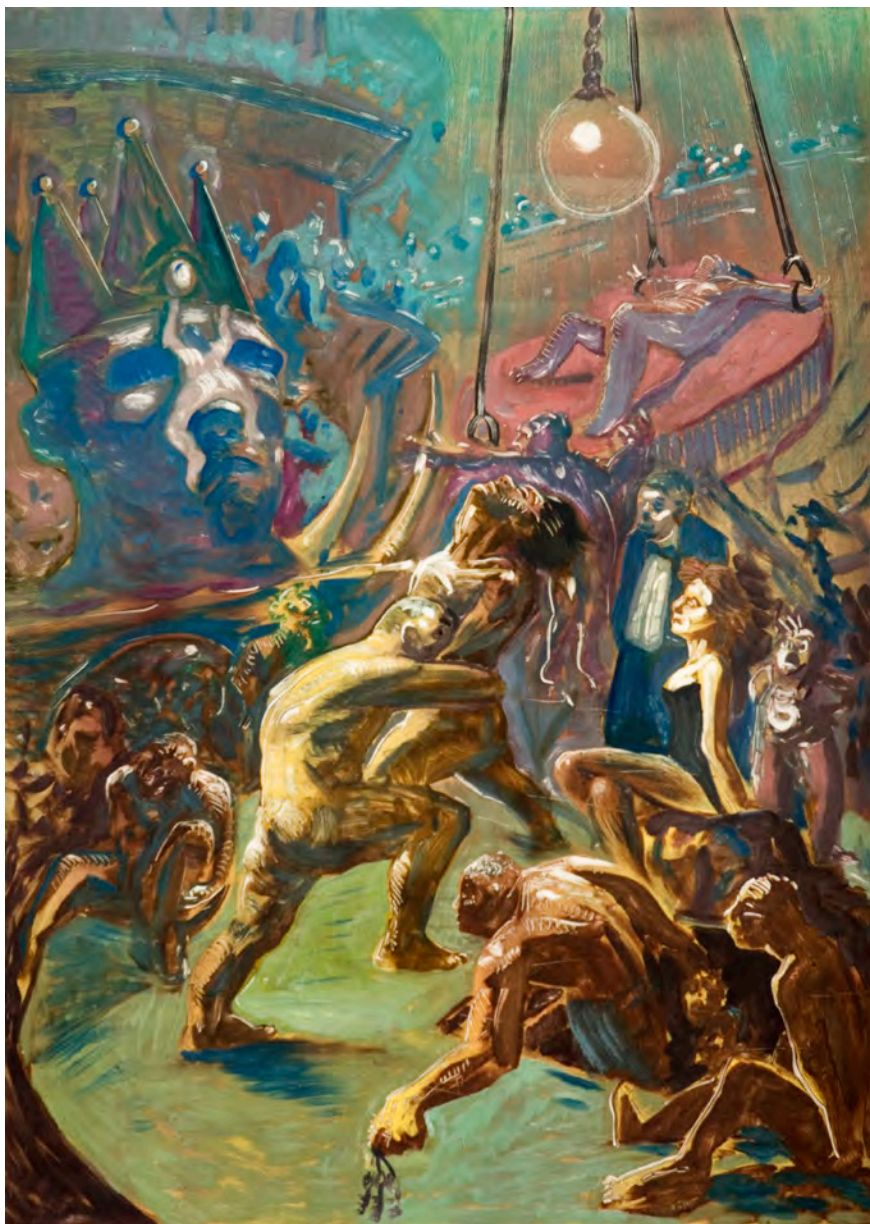
Museum of Modern Art, New York
Tate Gallery, London
British Council



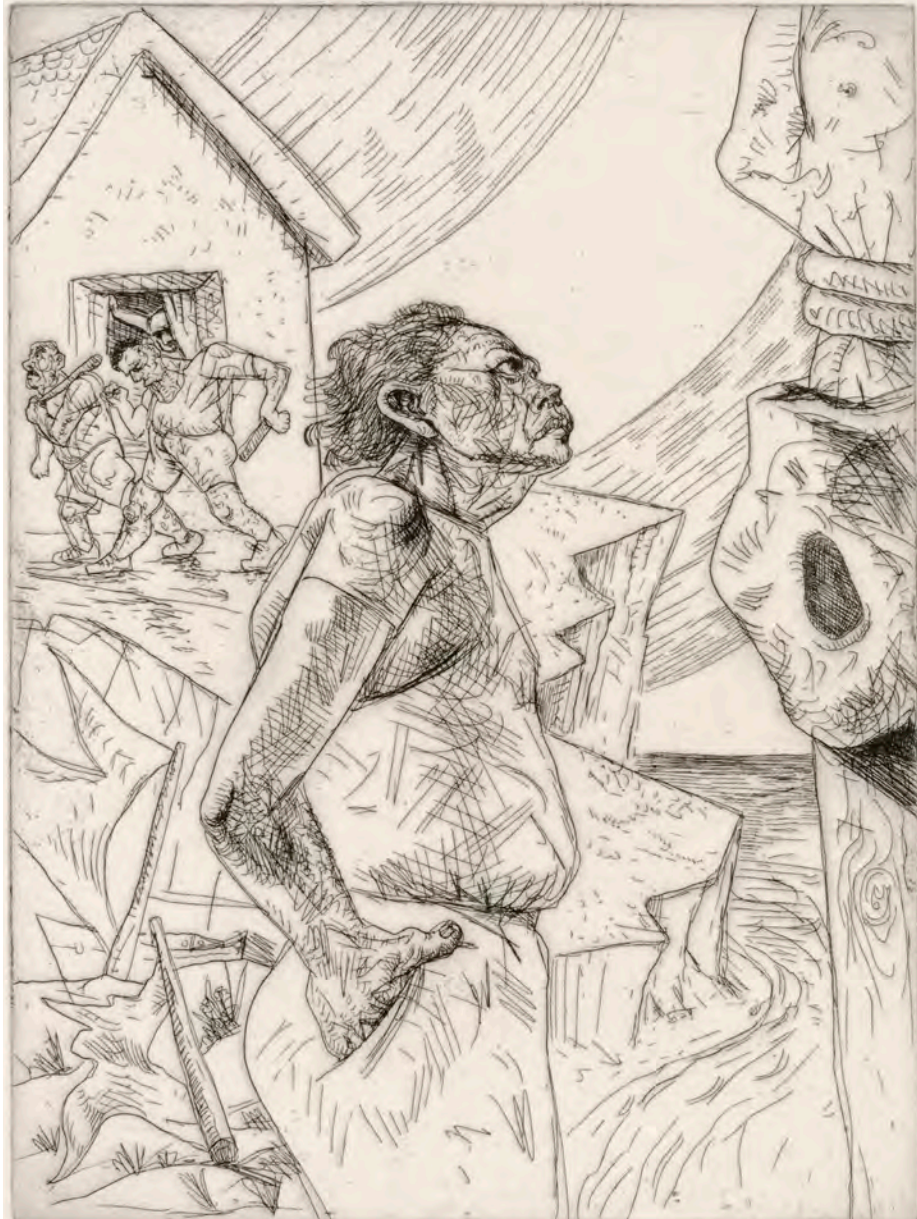
Peter, 1988
Etching
56 x 38 cm | 22 x 15 in
Edition of 30



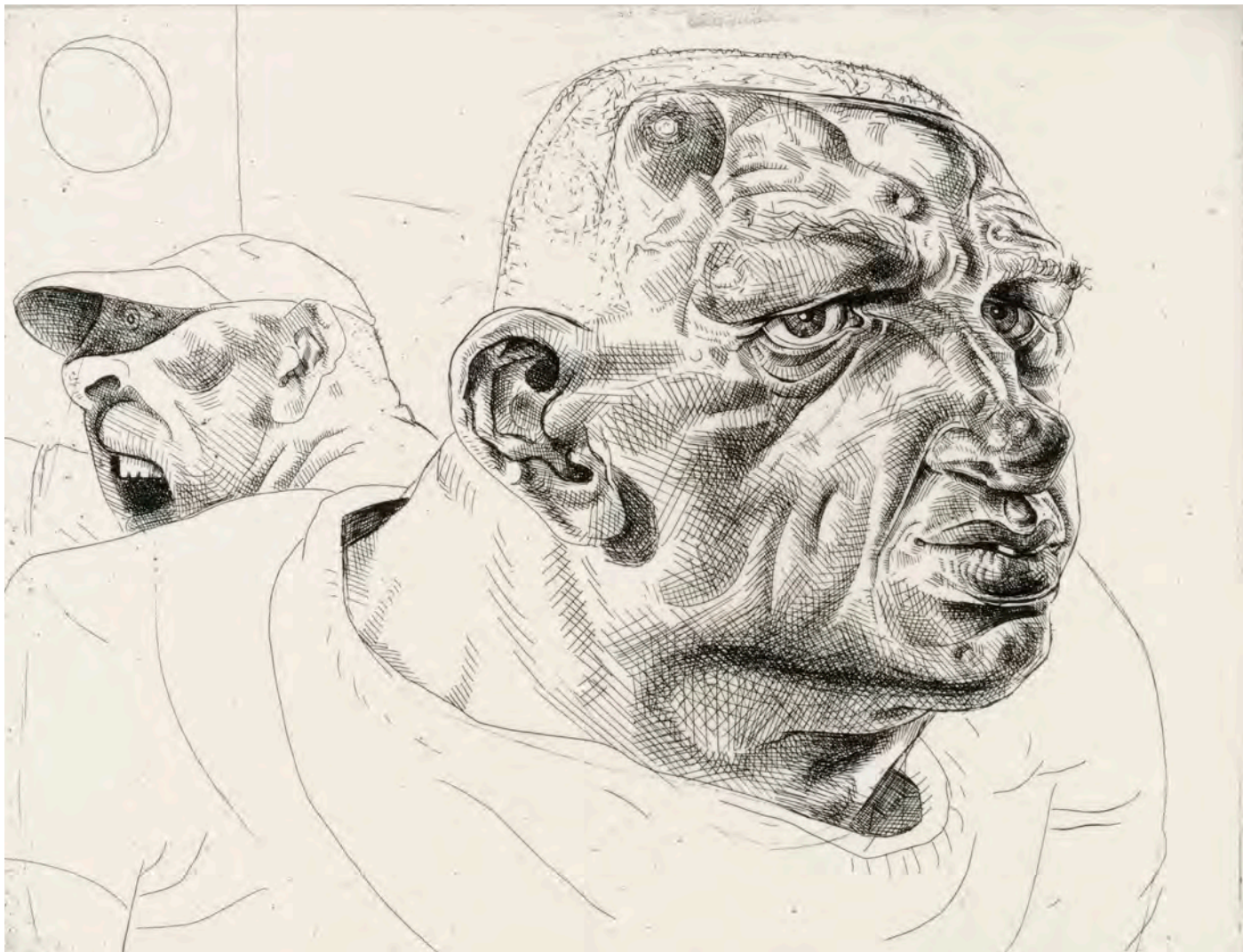
Stool Pigeon, 1990
Monotype
116.5 x 86 cm | 46 x 34 in



Au Bar II, 1990
Monoprint
135 x 81 cm | 53 1/4 x 32 in



The Broken Yacht, 1990
Etching
55 x 46.5 cm | 22 x 18 in
Edition of 50



On Parade, 1992

Etching

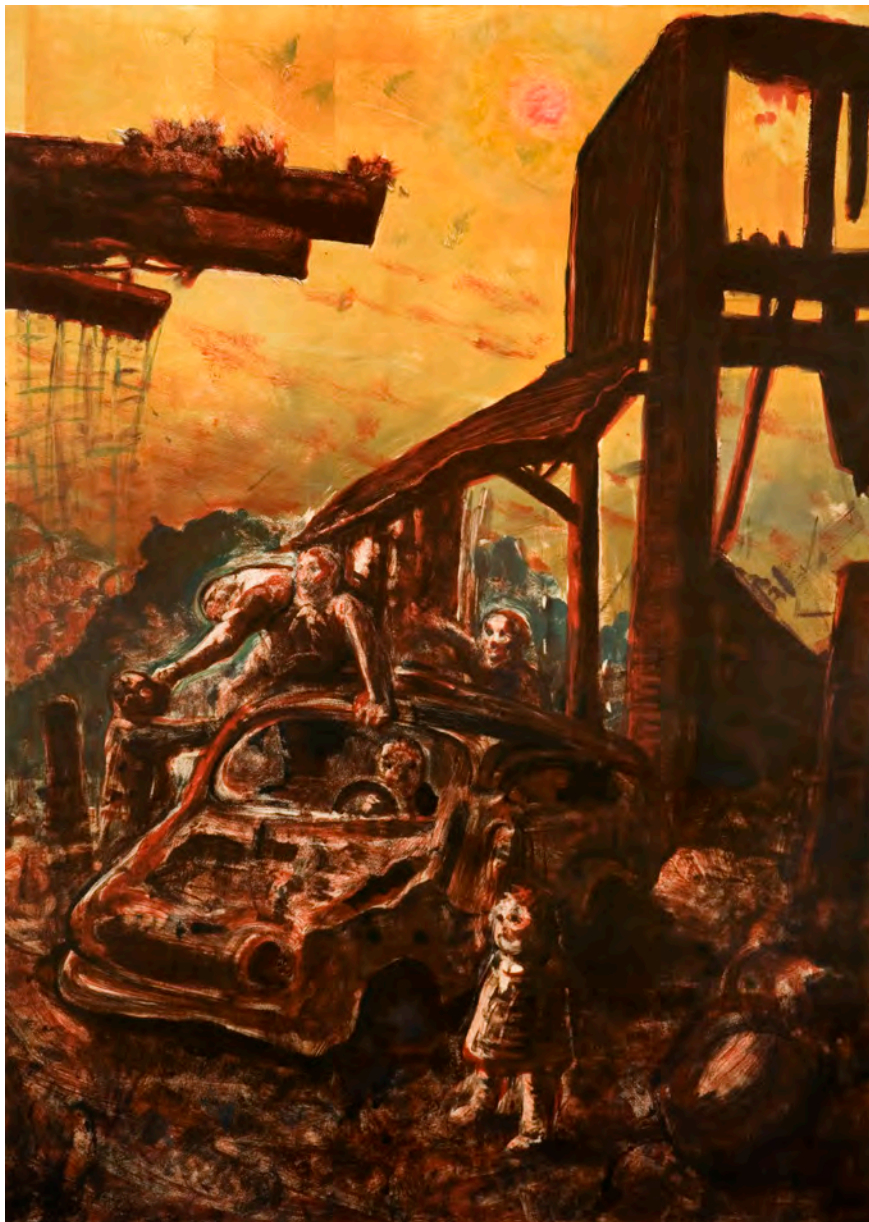
49.5 x 56 cm | 19 1/2 x 22 1/4 in

Edition of 50

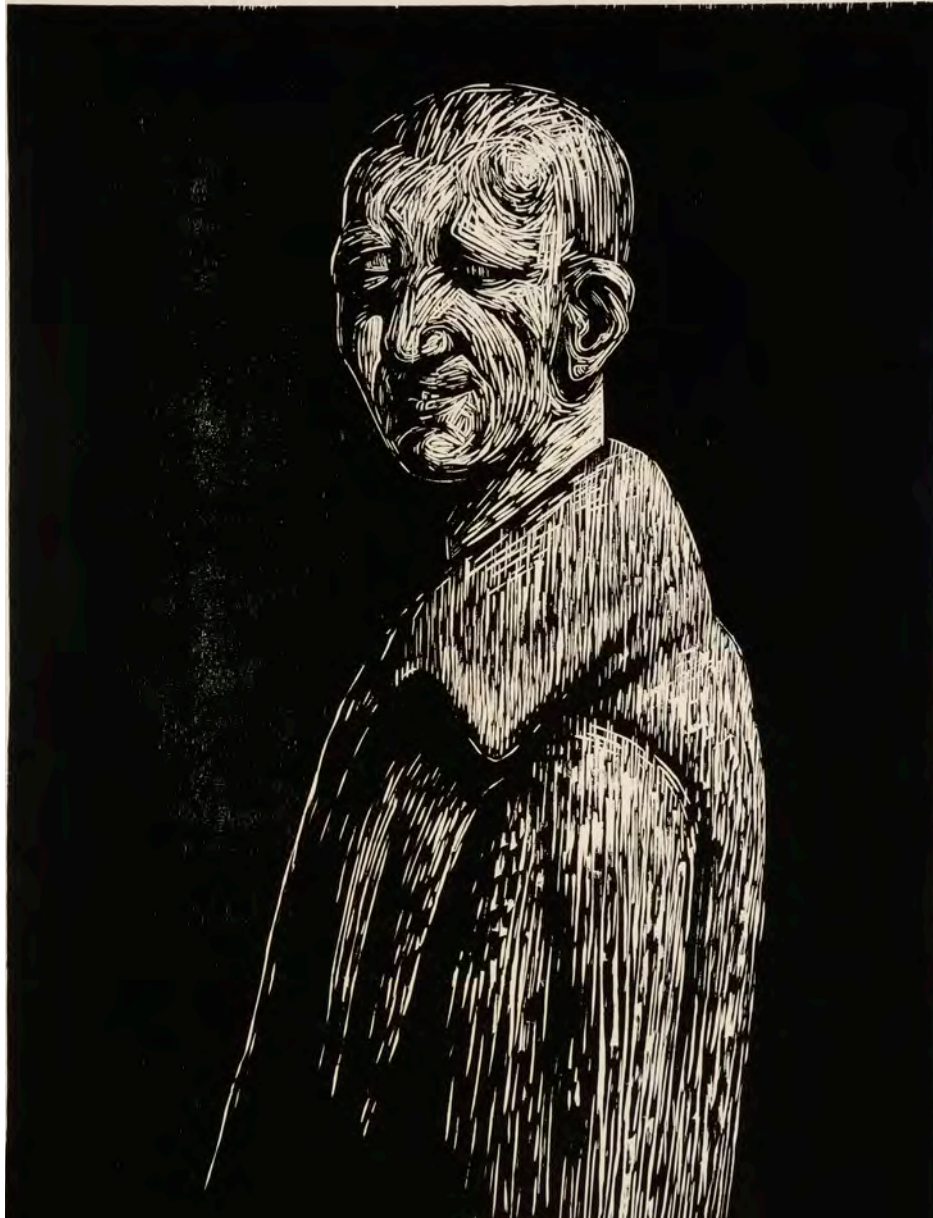
The Metropolitan Museum of Art, New York



Age of Uncertainty, 1990
Etching
47.5 x 53.5 cm | 19 x 21 in
Edition of 50



Torrance 6, 1992
Monotype
116.5 x 86 cm | 6 x 34 in

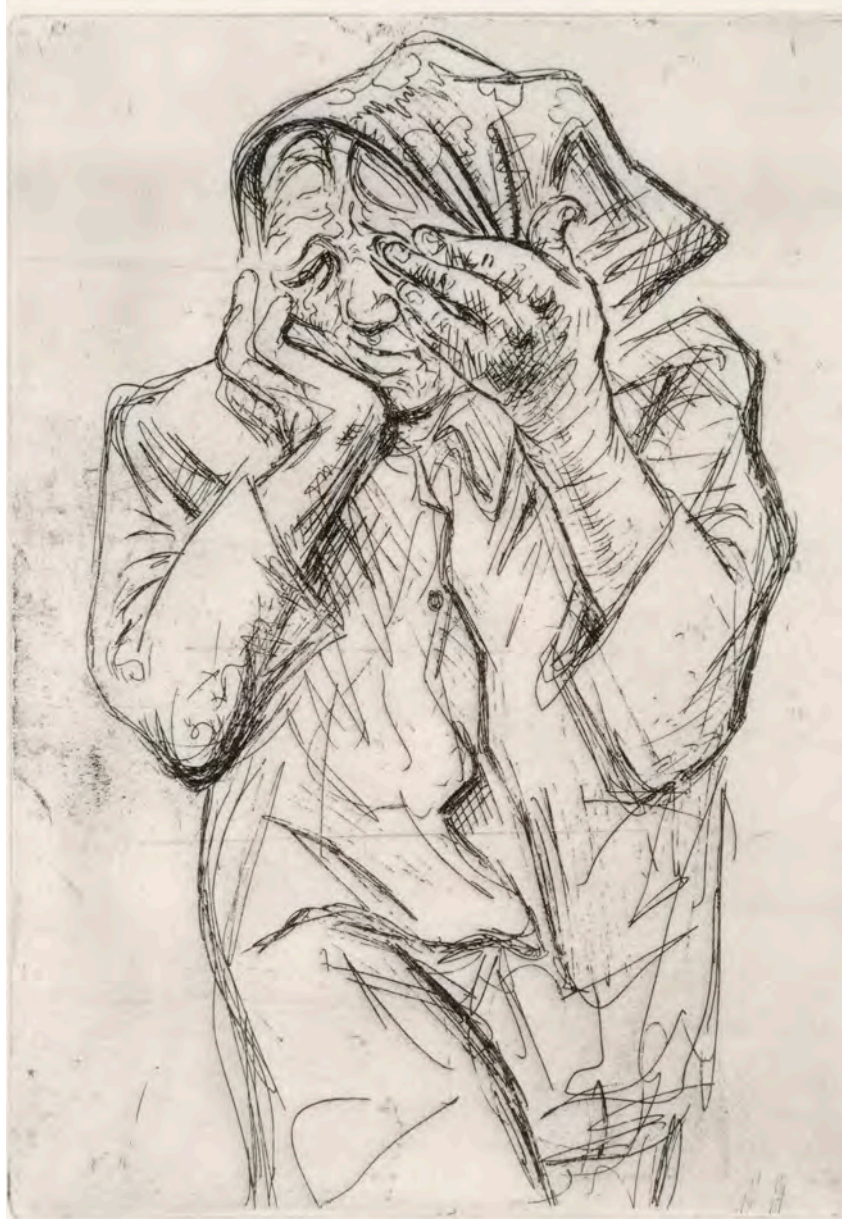


Suspicious Boy, 1994
Woodcut
121 x 81.5 cm | 47 3/4 x 32 1/4 in
Edition of 50

BOSNIA

1993 - 1994

A selection from the body of work produced in response to Howson's appointment by the Imperial War Museum as the Official War Artist for the conflict in Bosnia. During his second trip to the country his art materials were stolen, and so he resorted to using candles and boot polish to produce his drawings.



Cleansed, 1994

Etching

39.5 x 33.5 cm | 15 3/4 x 13 1/4 in

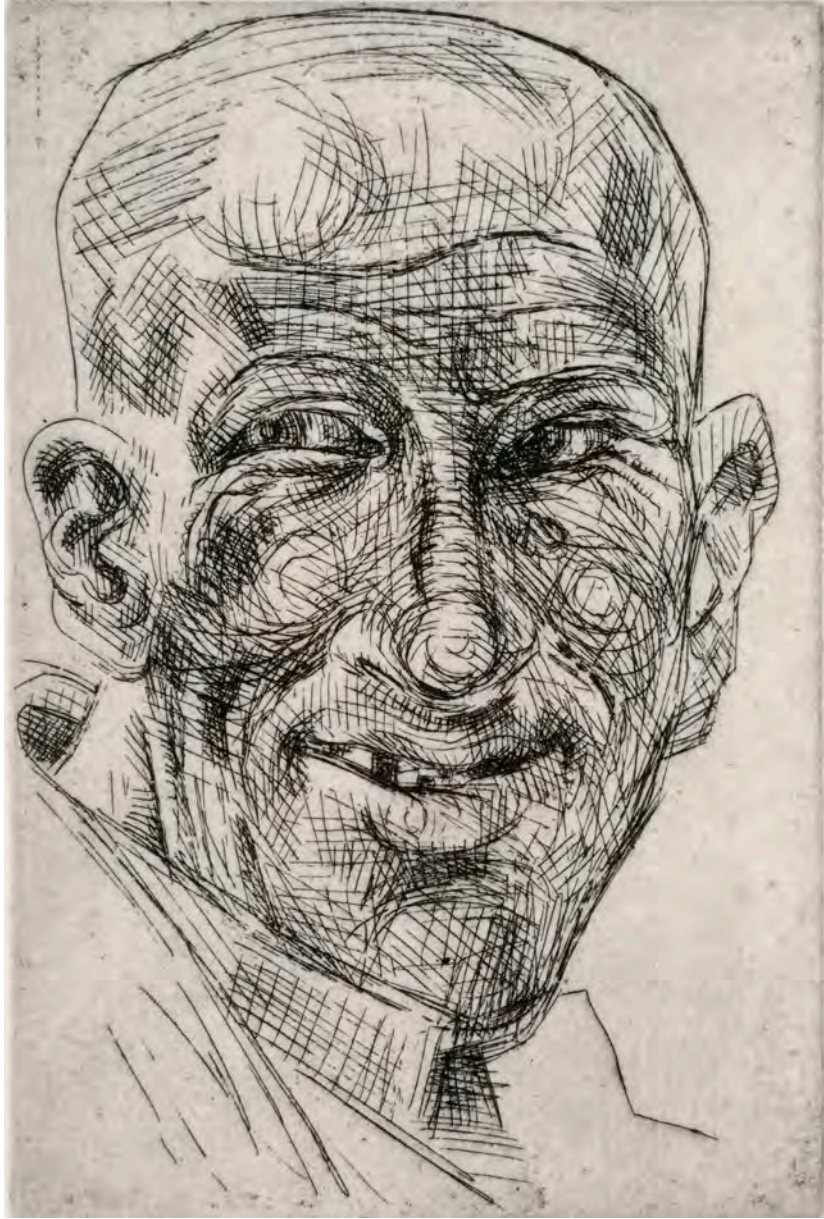
Edition of 50



Muslim Woman, 1994
Etching
52 x 43.5 cm | 20 1/2 x 17 1/4 in
Edition of 50



Rape, 1994
Lithograph
64 x 50.5 cm | 25 1/4 x 20 in
Edition of 50



My Bodyguard, 1994
Etching
39.5 x 33.5 cm | 15 3/4 x 13 1/4 in
Edition of 50

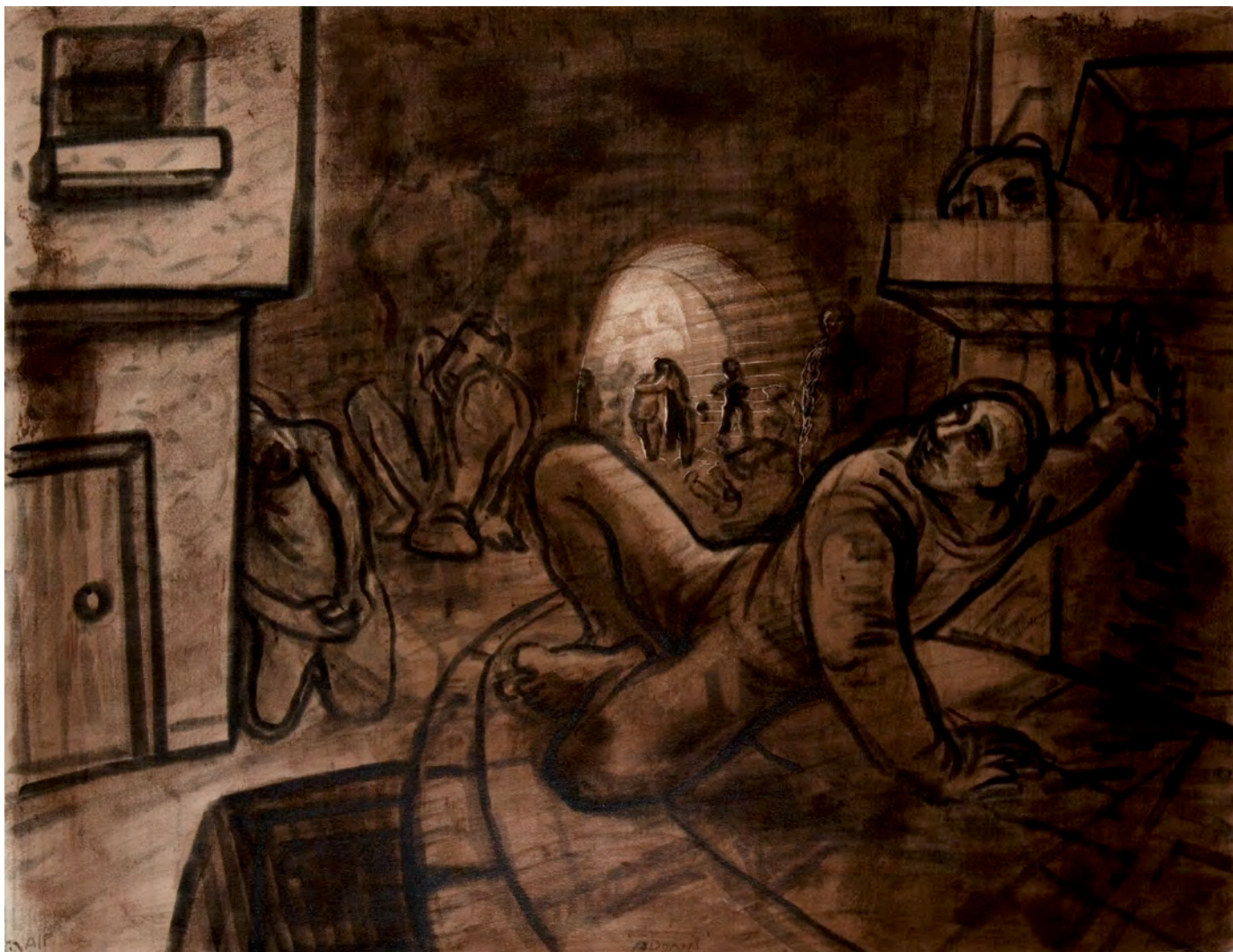


Road to Zenica, 1994
Screenprint
109 x 140 cm | 43 x 55 in
Edition of 100



Bon Bon Alley, 1994
Screenprint
77 x 135 cm | 30 x 53 in
Edition of 100

Isle of Man Arts Council
Museum of Modern Art, New York



Adonis, 1995
Monoprint
56 x 75 cm | 22 1/4 x 29 1/2 in



Revolutionary, 2001
Monoprint
82 x 68 cm | 32 1/4 x 26 3/4 in



Lucky, 2001
Monoprint
82 x 68 cm | 32 1/4 x 26 3/4 in

UNDERGROUND

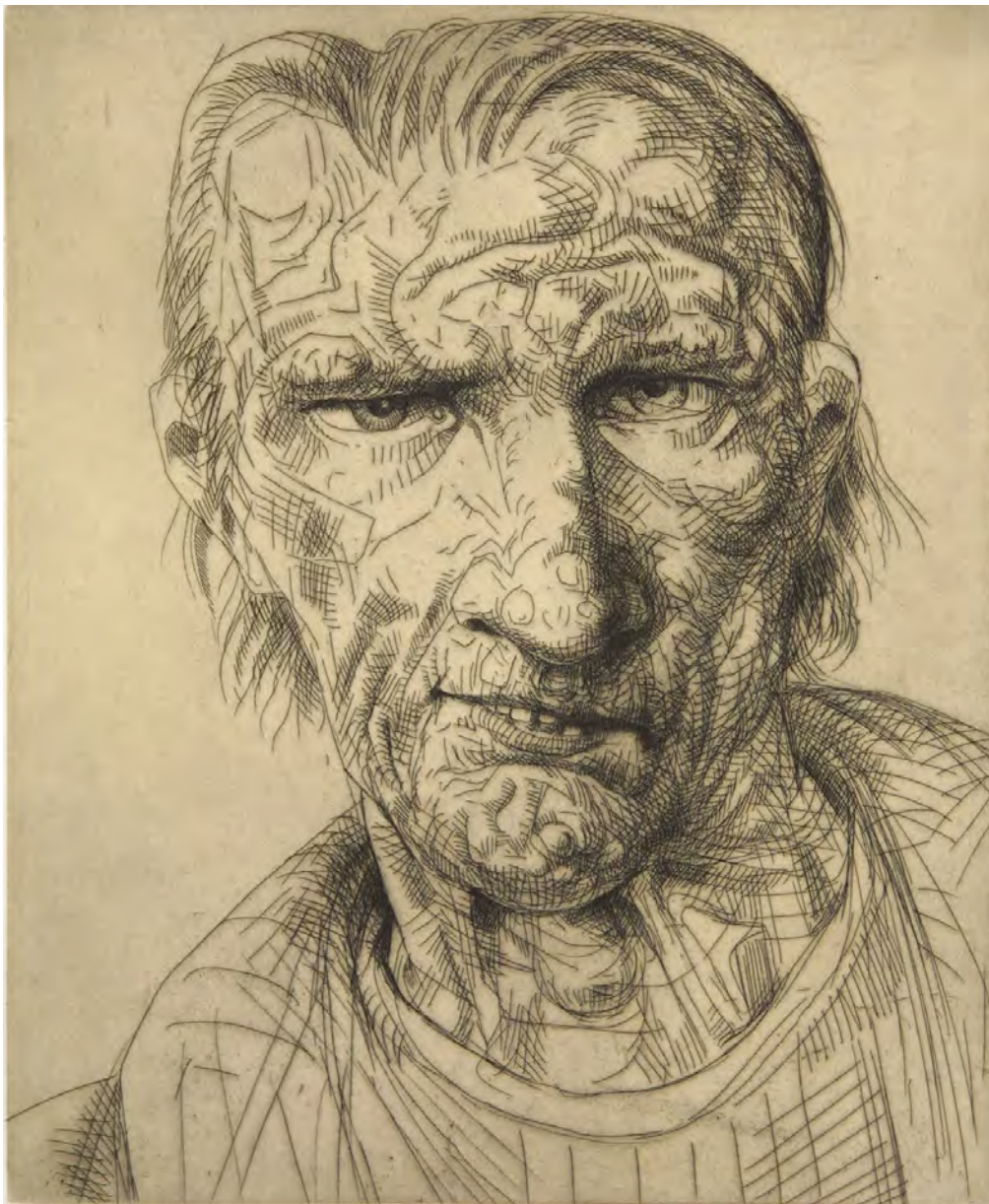
1998

A portfolio comprising 30 etchings in editions of 25 each

Image size 30 x 25cm / 12 x 10 in

Paper size 50 x 45 cm / 19 3/4 x 17 3/4 in

A portfolio of 30 etchings inspired by Howson's sketches, which he would quickly render whilst travelling around London. They are, as with the majority of his subjects, drunk, derelict or just interesting people. The suite was printed by Hope Suffrance Press in 1998, London, and published by Flowers Graphics.



Vauxhall, from Underground Portfolio, 1998

Etching

50 x 45 cm | 19 3/4 x 17 3/4 in

Edition of 25

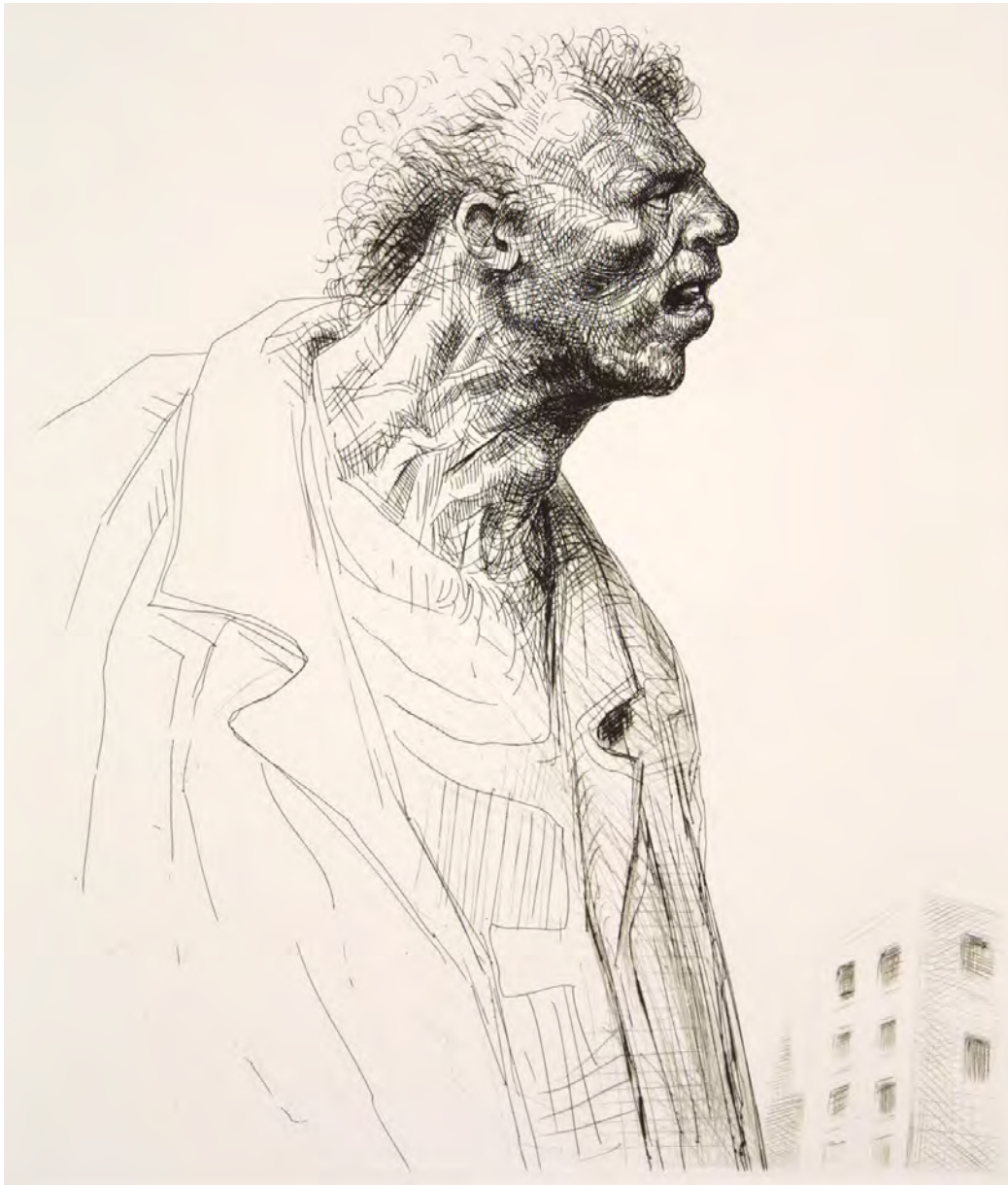


Sloane Square, from Underground Portfolio, 1998

Etching

50 x 45 cm | 19 3/4 x 17 3/4 in

Edition of 25



Olympia, from Underground Portfolio, 1998

Etching

50 x 45 cm | 19 3/4 x 17 3/4 in

Edition of 25



Holland Park, from Underground Portfolio, 1998

Etching

50 x 45 cm | 19 3/4 x 17 3/4 in

Edition of 25



Camden Town, from Underground Portfolio, 1998

Etching

50 x 45 cm | 19 3/4 x 17 3/4 in

Edition of 25

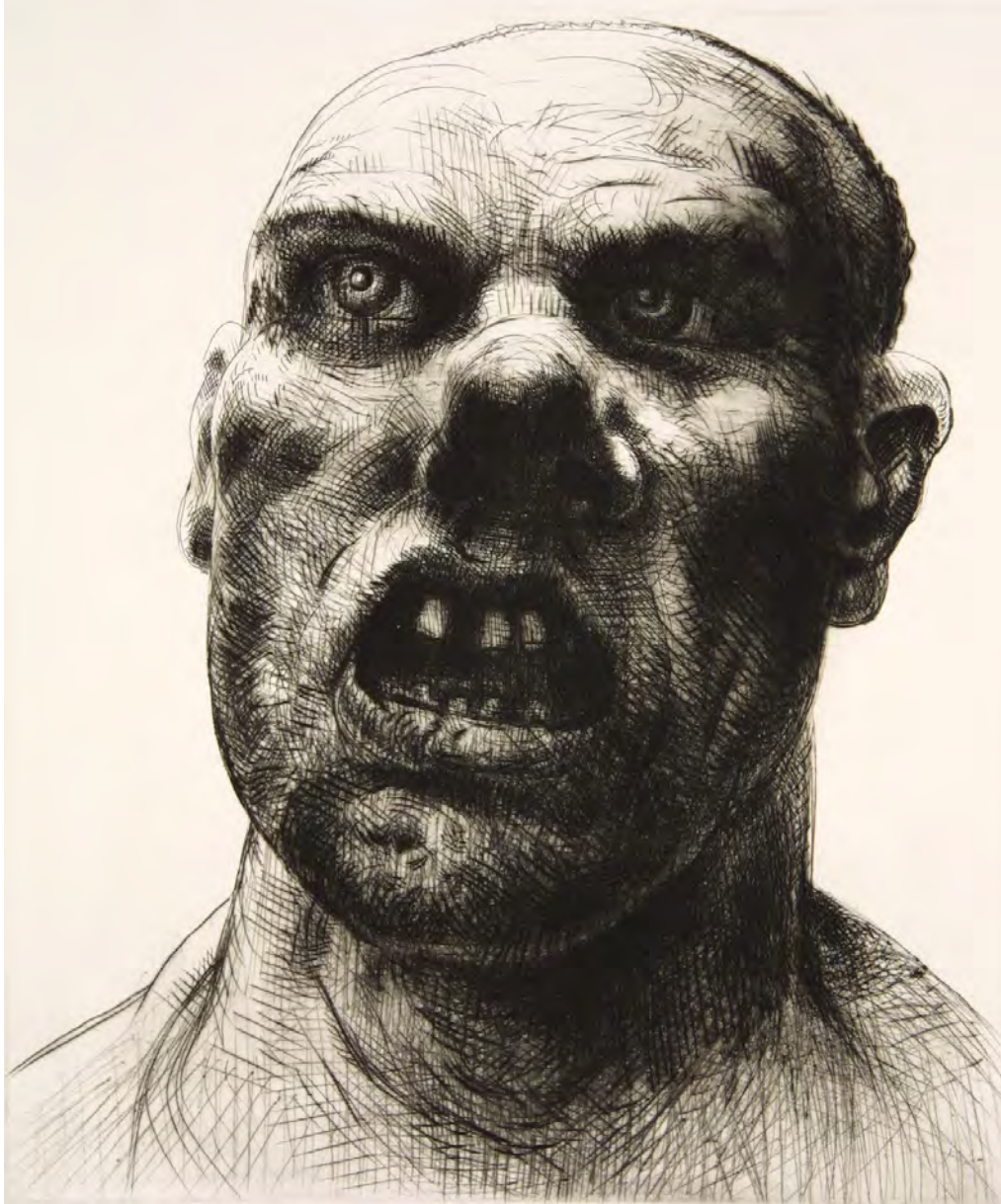


Prince Regent, from Underground Portfolio , 1998

Etching

50 x 45 cm | 19 3/4 x 17 3/4 in

Edition of 25



Barking, 1998
Drypoint
50 x 45 cm | 19 3/4 x 17 3/4 in
Edition of 25

THE STATIONS OF THE CROSS

2003 - 2004

A selection from the portfolio comprising 14 etchings in editions of 35 each

Image size 25 x 24.5cm / 9 7/8 x 9 5/8 in

Paper size 44 x 42.5 cm / 17 1/2 x 16 3/4 in

The suite was printed by Pete Kosowicz at Thumbprint Press, London on 300gsm somerset soft white textured paper, and published by Flowers Graphics. There are 10 boxed sets, each containing the 14 prints plus one original drawing by Peter Howson.



II. Jesus is Condemned to Death, from The Stations of the Cross Portfolio 2003
Etching with chine colle
44 x 42.5 cm | 17 1/2 x 16 3/4 in
Edition of 25



VI. Jesus Is Helped By Simon, from The Stations of the Cross Portfolio 2003

Etching with chine colle

44 x 42.5 cm | 17 1/2 x 16 3/4 in

Edition of 25



IX. Jesus meets the Womes on Jerusalem, from The Stations of the Cross Portfolio 2003

Etching with chine colle

44 x 42.5 cm | 17 1/2 x 16 3/4 in

Edition of 25



XIII Jesus Dies on the Cross, from The Stations of the Cross Portfolio 2003

Etching with chine colle

44 x 42.5 cm | 17 1/2 x 16 3/4 in

Edition of 25



Robroyston, 2011
Monotype
50 x 49 cm | 19 3/4 x 19 1/2 in



Temple, 2011
Monotype
50 x 45 cm | 19 3/4 x 17 3/4 in