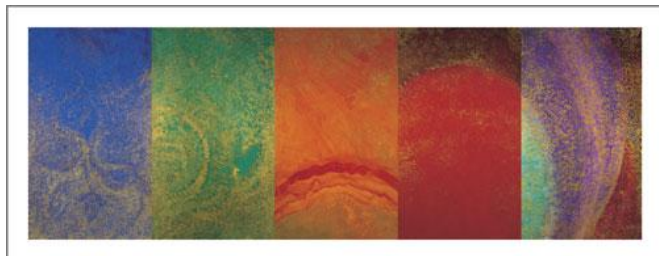


press release

ANNE MADDEN

AURORAS

Private View Tuesday 26 May 6-8pm



27 May – 20 June 2009

Opening times: Mon-Fri 10-6, Sat 10-2

Flowers

21 Cork St
London
W1S 3LZ

Madden resolves [her] paintings as problems of composition, pictorial process, texture, colour and light, but remains constantly aware of what can be achieved through this beyond mere abstraction. Her approach to painting could be described as material, as opposed to formal, but Madden is fully committed to (and wholly engaged with) the transformative powers of her medium.

Enrique Juncosa. Anne Madden. A Retrospective, Irish Museum of Modern Art, 2007

For me, these paintings are a continuation of the idea of light as a metaphor for the search for something beyond.

Anne Madden, 2007

Anne Madden is particularly well known in both Ireland and France where she has divided her time for the past forty years. Of Irish and Anglo-Chilean origin, she spent the first four years of her life Chile, before returning to Europe to live in Ireland and in London where she attended the Chelsea School of Arts and Crafts. In the 1980s, Madden took a hiatus from painting and devoted herself to drawing. She returned to the medium with a newly fortified commitment to painting as an essential human activity, and a belief in art's capacity to penetrate the 'something beyond' that is the ambition of spirituality and imagination.

Much of Madden's work can be seen as a paean to Mediterranean light, inspired, undoubtedly, by long periods spent living in the South of France. However, she has always maintained a presence in Ireland, and it is her affinity with the dramatic natural phenomena native to the Northern hemisphere that provides the animus of her newest work. For many years The Burren, a unique karst-landscape region in Northwest County Clare, acted as the source of inspiration for her painting. Imbued with an almost magical, other-worldly beauty, this setting provided the real-world reference point for her own imaginative landscape.

This unique relationship between artist and place was given a new dimension during a flight across the North Atlantic, when Madden witnessed the Aurora Borealis; a natural light display which occurs when sun flares caught by the northern wind are rebounded off the Earth's atmosphere. This dazzling spectacle provided Madden with a new imaginative springboard. Inspired by the Northern Lights, she embarked on an epic body of work comprising large-scale, boldly-patterned, brightly coloured evocations of the luminous phenomena, imaginings unshackled from a fixed landscape or location, and yet intimately dependent on an equilibrium between the axes of the spatial and temporal. As Madden herself has stated, such moments of creative revelation come 'only if we are in the right place at the right time'.

The paintings exhibited here are infused with a palpable sense of excitement, a fundamental liveliness that returns us again and again to the moment of visual discovery. As ever, Madden is interested in finding images that encapsulate many layers of potential symbolic meaning, and we, as viewers, approach them with the sense that the time for unravelling these meanings is now.

Recent exhibitions of Anne Madden's work include 'A Space of Time', Dublin City Gallery, 2003, and a major retrospective of her work in the Irish Museum of Modern Art in 2007. The artist's work is represented in public collections including the Musée d'Art Moderne de la Ville de Paris, the Irish Museum of Modern Art, and the Centre National d'Art Contemporain Georges Pompidou, Paris.

For further information, please contact Ellie Harrison-Read at Flowers East on 020 7920 7777 or email ellie@flowerseast.com

Flowers 21 Cork St London W1S 3LZ T: 020 7439 7766 www.flowerseast.com